

# User Manual for the LMD Martian Atmospheric General Circulation Model

Ehouarn MILLOUR, François FORGET  
*Contributors to earlier versions: Karine DASSAS,*  
Christophe HOURDIN, Frédéric HOURDIN,  
and Yann WANHERDRICK

June 20, 2018

# Contents

<b>1</b>	<b>Introduction</b>	<b>3</b>
<b>2</b>	<b>Main features of the model</b>	<b>4</b>
2.1	Basic principles . . . . .	4
2.2	Dynamical-Physical separation . . . . .	4
2.3	Grid boxes: . . . . .	5
2.3.1	Horizontal grids . . . . .	5
2.3.2	Vertical grids . . . . .	7
2.4	Variables used in the model . . . . .	9
2.4.1	Dynamical variables . . . . .	9
2.4.2	Physical variables . . . . .	9
2.4.3	Tracers . . . . .	9
<b>3</b>	<b>The physical parameterizations of the Martian model: some references</b>	<b>11</b>
3.1	General . . . . .	11
3.2	Radiative transfer . . . . .	11
3.2.1	<b>CO<sub>2</sub> gas absorption/emission:</b> . . . . .	11
3.2.2	<b>Absorption/emission and diffusion by dust:</b> . . . . .	12
3.3	Subgrid atmospheric dynamical processes . . . . .	12
3.3.1	Turbulent diffusion in the upper layer . . . . .	12
3.3.2	Convection . . . . .	13
3.3.3	Effects of subgrid orography and gravity waves . . . . .	13
3.4	Surface thermal conduction . . . . .	13
3.5	CO <sub>2</sub> Condensation . . . . .	13
3.6	Tracer transport and sources . . . . .	13
3.7	Thermosphere . . . . .	14
<b>4</b>	<b>Running the model: a practice simulation</b>	<b>15</b>
4.1	Obtaining the model . . . . .	15
4.2	Prerequisites . . . . .	16
4.3	Installing the model . . . . .	16
4.3.1	Settings in LMDZ.MARS (deprecated) . . . . .	16
4.3.2	Settings in LMDZ.COMMON (advised) . . . . .	18
4.4	Compiling the model . . . . .	18
4.4.1	Compiling in LMDZ.MARS (deprecated) . . . . .	18
4.4.2	Compiling in LMDZ.COMMON (advised) . . . . .	18
4.5	Input files (initial states and def files) . . . . .	19
4.6	Running the model . . . . .	19
4.7	Visualizing the output files . . . . .	21
4.7.1	Using Ferret to visualize outputs . . . . .	21
4.7.2	Using GrAds to visualize outputs . . . . .	21
4.8	Resuming a simulation . . . . .	22

4.9	Chain simulations . . . . .	22
4.10	Creating and modifying initial states . . . . .	23
4.10.1	Using program “newstart” . . . . .	23
4.10.2	Creating the initial start_archive.nc file . . . . .	24
4.10.3	Changing the horizontal or vertical grid resolution . . . . .	25
<b>5</b>	<b>Program organization and compilation script</b>	<b>26</b>
5.1	Organization of the model source files . . . . .	27
5.2	Programming . . . . .	27
5.3	Model organization . . . . .	28
5.4	Compiling the model . . . . .	28
<b>6</b>	<b>Input/Output</b>	<b>30</b>
6.1	NetCDF format . . . . .	30
6.1.1	NetCDF text representation: ncdump . . . . .	30
6.1.2	Graphic visualization of NetCDF files using GrAds . . . . .	31
6.1.3	Graphic visualization of NetCDF files using Ferret . . . . .	31
6.2	Input and parameter files . . . . .	31
6.2.1	run.def . . . . .	32
6.2.2	callphys.def . . . . .	34
6.2.3	traceur.def . . . . .	37
6.2.4	z2sig.def . . . . .	37
6.2.5	Initialization files: start and startfi . . . . .	38
6.3	Output files . . . . .	45
6.3.1	NetCDF restart files - restart.nc and restartfi.nc . . . . .	45
6.3.2	NetCDF file - diagfi.nc . . . . .	45
6.3.3	Stats files . . . . .	46
<b>7</b>	<b>Zoomed simulations</b>	<b>50</b>
7.1	To define the zoomed area . . . . .	50
7.2	Making a zoomed initial state . . . . .	50
7.3	Running a zoomed simulation and stability issue . . . . .	51
<b>8</b>	<b>Water Cycle Simulation</b>	<b>52</b>
<b>9</b>	<b>Photochemical Module</b>	<b>53</b>
<b>10</b>	<b>Thermosphere</b>	<b>55</b>
<b>11</b>	<b>1D version of the Mars model</b>	<b>56</b>
11.1	Compilation . . . . .	56
11.2	1-D runs and input files . . . . .	56
11.3	Output data . . . . .	58
<b>A</b>	<b>GCM Martian Calendar</b>	<b>59</b>
<b>B</b>	<b>Utilities</b>	<b>61</b>
B.1	concatnc . . . . .	61
B.2	lslin . . . . .	61
B.3	localtime . . . . .	61
B.4	zrecast . . . . .	61
B.5	hrecast . . . . .	61
B.6	expandstartfi . . . . .	62
B.7	extract . . . . .	62

# Chapter 1

## Introduction

This document is a user manual for the General Circulation Model of the Martian atmosphere developed by the Laboratoire de Météorologie Dynamique of the CNRS in Paris in collaboration with the Atmospheric and Oceanic Planetary Physics sub-department in Oxford. It corresponds to the version of the model available since November 2002, that includes the new dynamic code lmdz3.3 and the input and output data in NetCDF format. The physical part has been available since June 2001, including the NLTE radiative transfer code valid at up to 120 km, tracer transport, the water cycle with water vapour and ice, the "double mode" dust transport model, and with optional photochemistry and extension in the thermosphere up to 250km.

A more general, scientific description of the model without tracers can be found in *Forget et al.* [1999].

Chapter 2 of this document, to be read before any of the others, describes the main features of the model. The model is divided into two relatively independent parts: (1) The hydrodynamic code, that is shared by all atmospheres (Earth, Mars, etc.) that integrates the fluid mechanics equations in time and on the globe, and (2) a set of Martian physical parameterizations, including, for example, the radiative transfer calculation in the atmosphere and the turbulence mix in the upper layer.

It is followed by a list of references for anyone requiring a detailed description of the physics and the numerical formulation of the parameterizations of the Martian physical part (Chapter 3).

For your **first contact with the model**, chapter 4 guides the user through a practice simulation (choosing the initial states and parameters and visualizing the output files).

The document then describes the programming code for the model, including a user computer manual for compiling and running the model (Chapter 5).

Chapter 6 describes the input/output data of the model. The input files are the files needed to initialize the model (state of the atmosphere at the initial time  $t_0$  as well as a dataset of boundary conditions) and the output files are "time series", i.e. records of the atmospheric flow evolution as simulated by the model, the "diagfi files", the "stats files", the daily averages etc. Some means to edit or visualize these files (editor "ncdump" and the graphics software "grads") are also described.

Chapter 8 explains how to run a simulation including the water cycle. Chapter 9 illustrates how to run the model with the photochemical module.

Finally, chapter 11 will help you to use a 1-dimensional version of the model, which may be a simpler tool for some analysis work.

# Chapter 2

## Main features of the model

### 2.1 Basic principles

The General Circulation Model (GCM) calculates the temporal evolution of the different **variables** (listed below) that control or describe the Martian meteorology and climate at different points of a **3D “grid”** (see below) that covers the entire atmosphere.

From an initial state, the model calculates the evolution of these variables, timestep by timestep:

- At instant  $t$ , we know variable  $X_t$  (temperature for example) at one point in the atmosphere.
- We calculate the evolution (the **tendencies**)  $(\frac{\partial X}{\partial t})_1$ ,  $(\frac{\partial X}{\partial t})_2$ , etc. arising from each physical phenomenon, calculated by a **parameterization** of each of these phenomenon (for example, heating due to absorption of solar radiation).
- At the next time step  $t + \delta t$ , we can calculate  $X_{t+\delta t}$  from  $X_t$  and  $(\frac{\partial X}{\partial t})$ . This is the **“integration”** of the variables in time. (For example,  $X_{t+\delta t} = X_t + \delta t(\frac{\partial X}{\partial t})_1 + \delta t(\frac{\partial X}{\partial t})_2 + \dots$ )

**The main task of the model is to calculate these tendencies  $(\frac{\partial X}{\partial t})$  arising from the different parameterized phenomenon.**

### 2.2 Dynamical-Physical separation

In practice, the 3D model operates in two parts:

- one **dynamical part** containing the numerical solution of the general equations for atmospheric circulation. This part (including the programming) is common to the Earth and Martian model, and in general for all atmospheres of the terrestrial type.
- a second **physical part** that is specific to the planet in question and which calculates the forced circulation and the climate details at each point.

The calculations for the dynamical part are made on a 3D grid with horizontal exchanges between the grid boxes, whereas the physical part can be seen as a juxtaposition of atmosphere “columns” that do not interact with each other (see diagram 2.1).

The dynamical and physical parts deal with variables of different natures, and operate on grids that are differently constructed. The temporal integration of the variables is based on different numerical schemes (simple, such as the one above for the physical part, and more complicated, the “Matsuno-Leapfrog” scheme for the dynamical part). The timesteps are also different. The physical timestep is `iphysiq` times longer than the dynamical

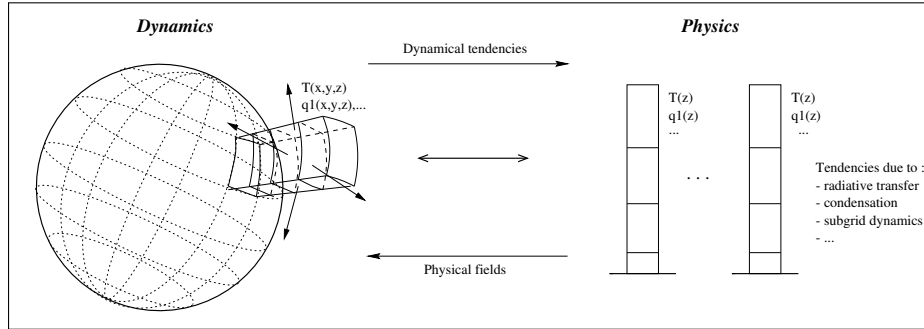


Figure 2.1: Physical/dynamical interface

timestep, as the solution of the dynamic equations requires a shorter timestep than the forced calculation for the physical part.

In practice, the main program that handles the whole model (`gcm.F`) is located in the dynamical part. When the temporal evolution is being calculated, at each timestep the program calls the following:

1. Call to the subroutine that handles the total tendency calculation ( $\frac{\partial X}{\partial t}$ ) arising from the dynamical part (`caldyn.F`)
2. Integration of these dynamical tendencies to calculate the evolution of the variables at the following timesteps (subroutine `integr8.F`)
3. Every `iphysiq` dynamical timestep, a call to the interface subroutine (`calfis.F`) with the physical model (`physiq.F`), that calculates the evolution of some of the purely physical variables (e.g: surface temperature `tsurf`) and returns the tendencies ( $\frac{\partial X}{\partial t}$ ) arising from the physical part.
4. Integration of the physical variables (subroutine `addfi.F`)
5. Similarly, calculation and integration of tendencies due to the horizontal dissipation and the “sponge layer” is done every `idissip` dynamical time step.

*Remark: The physical part can be run separately for a 1-D calculation for a single column using program `testphys1d.F`.*

## 2.3 Grid boxes:

Examples of typical grid values are `64x48x25`, `64x48x32` or `32x24x25` in longitude`x`latitude`x`altitude. For Mars (radius~3400 km), a `64x48` horizontal grid corresponds to grid boxes of the order of `330x220` kilometers near the equator.

### 2.3.1 Horizontal grids

Dynamics and physics use different grids. Figure 2.2 shows the correspondance and indexing of the physical and dynamical grids as well as the different locations of variables on these grids. To identify the coordinates of a variable (at one grid point up, down, right or left) we use coordinates `r lonu`, `r latu`, `r lonv`, `r latv` (longitudes and latitudes, in radians).

On the dynamical grid, values at `i=1` are the same as at `i=IM+1` as the latter node is a redundant point (due to the periodicity in longitude, these two nodes are actually located

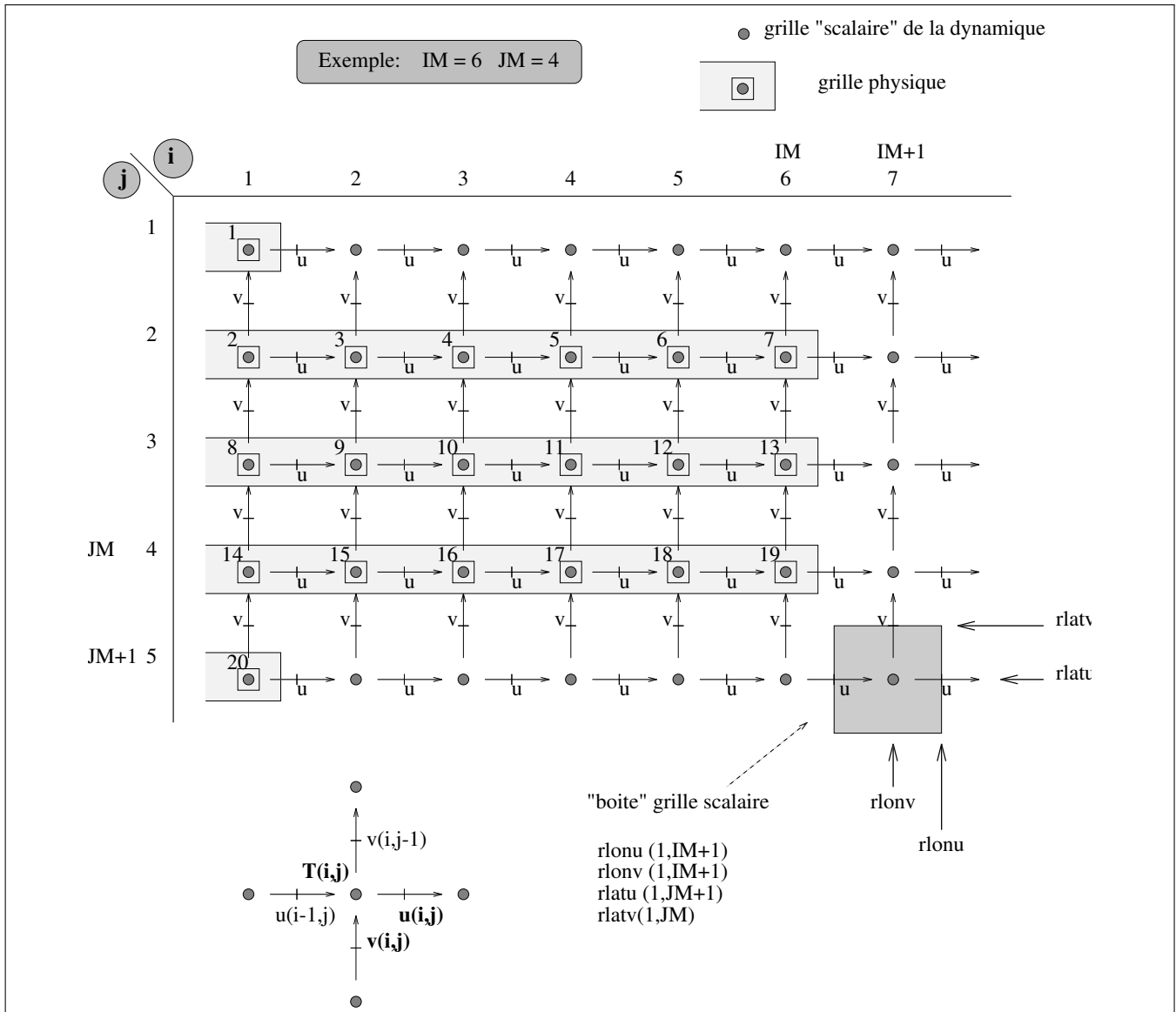


Figure 2.2: Dynamical and physical grids for a  $6 \times 7$  horizontal resolution. In the dynamics (but not in the physics) winds  $u$  and  $v$  are on specific staggered grids. Other dynamical variables are on the dynamical "scalar" grid. The physics uses the same "scalar" grid for all the variables, except that nodes are indexed in a single vector containing  $NGRID=2+(JM-1) \times IM$  points when counting from the north pole.

N.B.: In the Fortran program, the following variables are used:  $iim=IM$ ,  $iip1=IM+1$ ,  $jjm=JM$ ,  $jjp1=JM+1$ .

at the same place). Similarly, the extreme  $j=1$  and  $j=JM+1$  nodes on the dynamical grid (respectively corresponding to North and South poles) are duplicated  $IM+1$  times. In contrast, the physical grid does not contain redundant points (only one value for each pole and no extra point along longitudes), as shown in figure 2.2. In practice, computations relative to the physics are made for a series of `ngrid` atmospheric columns, where  $NGRID=IM \times (JM-1)+2$ .

### 2.3.2 Vertical grids

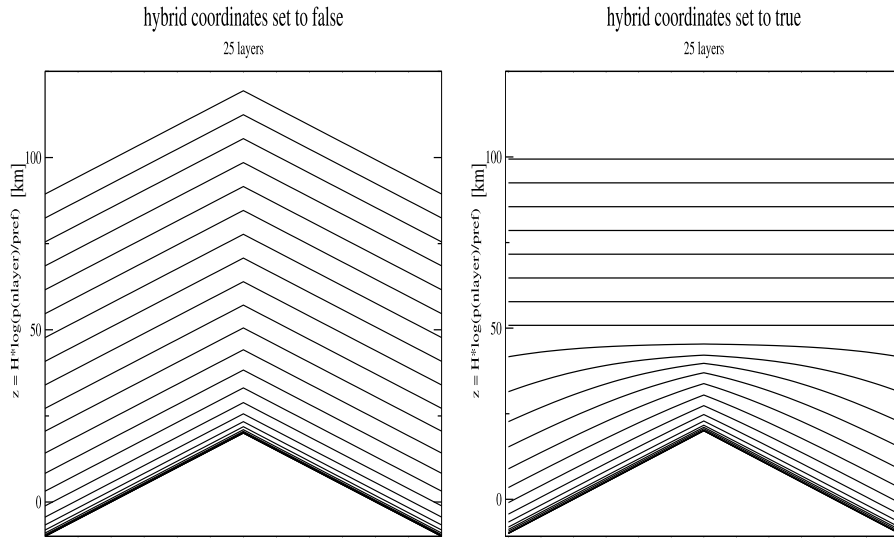


Figure 2.3: Sketch illustrating the difference between hybrid and non-hybrid coordinates

The GCM was initially programmed using sigma coordinates  $\sigma = p/p_s$  (atmospheric pressure over surface pressure ratio) which had the advantage of using a constant domain ( $\sigma = 1$  at the surface and  $\sigma = 0$  at the top of the atmosphere) whatever the underlying topography. However, it is obvious that these coordinates significantly disturb the stratospheric dynamical representation as the topography is propagated to the top of the model by the coordinate system. This problem can elegantly be solved by using a hybrid sigma-P (sigma-pressure) hybrid coordinate which is equivalent to using  $\sigma$  coordinates near the surface and gradually shifting to purely pressure  $p$  coordinates with increasing altitude. Figure 2.3 illustrates the importance of using these hybrid coordinates compared to simple  $\sigma$  coordinates. The distribution of the vertical layers is irregular, to enable greater precision at ground level. In general we use 25 levels to describe the atmosphere to a height of 80 km, 32 levels for simulations up to 120 km, or 50 levels to rise up to thermosphere. The first layer describes the first few meters above the ground, whereas the upper layers span several kilometers. Figure 2.4 describes the vertical grid representation and associated variables.



DYNAMICS		PHYSICS
-----		-----
[coordinates ap(),bp()]		[pressures]
ap(llm+1)=0,bp(llm+1)=0	*****	plev(nlayer+1)=0
aps(llm),bps(llm)	.. llm ..... nlayer ...	play(nlayer)
ap(llm),bp(llm)	*****	plev(nlayer)
aps(llm-1),bps(llm-1)	.. llm-1 ..... nlayer-1 .	play(nlayer-1)
ap(llm-1),bp(llm-1)	*****	plev(nlayer-1)
	:	:
	:	:
	:	:
aps(2),bps(2)	... 2 ..... 2 ....	play(2)
ap(2),bp(2)	*****	plev(2)
aps(1),bps(1)	... 1 ..... 1 ....	play(1)
ap(1)=1,bp(1)=0	*****surface*****	plev(1)=Ps

Figure 2.4: Vertical grid description of the `llm` (or `nlayer`) atmospheric layers in the programming code (`llm` is the variable used in the dynamical part, and `nlayer` is used in the physical part). Variables `ap`, `bp` and `aps`, `bps` indicate the hybrid levels at the interlayer levels and at middle of the layers respectively. Pressure at the interlayer is  $P_{lev}(l) = ap(l) + bp(l) \times Ps$  and pressure in the middle of the layer is defined by  $P_{lay}(l) = aps(l) + bps(l) \times Ps$ , (where  $Ps$  is surface pressure). Sigma coordinates are merely a specific case of hybrid coordinates such that  $aps = 0$  and  $bps = P/Ps$ . Note that for the hybrid coordinates,  $bps = 0$  above  $\sim 50$  km, leading to purely pressure levels. The user can choose whether to run the model using hybrid coordinates or not by setting variable `hybrid` in `run.def` to `True` or `False`.

## 2.4 Variables used in the model

### 2.4.1 Dynamical variables

The dynamical state variables are the atmospheric temperature, surface pressure, winds and tracer concentrations. In practice, the formulation selected to solve the equations in the dynamics is optimised using the following less “natural” variables:

- **potential temperature**  $\theta$  (`teta` in the code), linked to temperature  $\mathbf{T}$  by  $\theta = T(P/P_{ref})^{-\kappa}$  with  $\kappa = R/C_p$  (note that  $\kappa$  is called `kappa` in the dynamical code, and `rcp` in the physical code). We take  $P_{ref} = 610$  Pa on Mars.
- **surface pressure** (`ps` in the code).
- **mass** the atmosphere mass in each grid box (`masse` in the code).
- **the covariant meridional and zonal winds** `ucov` and `vcov`. These variables are linked to the “natural” winds by  $u_{cov} = c_u * u$  and  $v_{cov} = c_v * v$ , where  $c_u$  and  $c_v$  are constants that only depend on the latitude.
- **mixing ratio of tracers** in the atmosphere, typically expressed in kg/kg (array `q` in the code).

`ucov` and `vcov`, “vectorial” variables, are stored on “scalari” grids `u` and `v` respectively, in the dynamics (see section 2.2). `teta`, `q`, `ps`, `masse`, “scalar variables”, are stored on the “scalar” grid of the dynamics.

### 2.4.2 Physical variables

In the physics, the state variables of the dynamics are transmitted via an interface that interpolates the winds on the scalar grid (that corresponds to the physical grid) and transforms the dynamical variables into more “natural” variables. Thus we have winds  $\mathbf{u}$  and  $\mathbf{v}$  ( $\text{m.s}^{-1}$ ), temperature  $\mathbf{T}$  (K), pressure at the middle of the layers **play** (Pa) and at interlayers **plev** (Pa), tracers **q**, etc. (kg/kg) on the same grid.

Furthermore, the physics also handle the evolution of the purely physical state variables:

- **co2ice** CO<sub>2</sub> ice on the surface ( $\text{kg.m}^{-2}$ )
- **tsurf** surface temperature (K),
- **tsoil** temperature at different layers under the surface (K),
- **emis** surface emissivity,
- **q2** wind variance, or more precisely the square root of the turbulent kinetic energy.
- **qsurf** tracer on the surface ( $\text{kg.m}^{-2}$ ).

### 2.4.3 Tracers

The model may include different types of tracers:

- dust particles, which may have several modes
- chemical species which depict the chemical composition of the atmosphere
- water vapor and water ice particles
- ...

In the code, all tracers are stored in one three-dimensional array  $q$ , the third index of which corresponds to each individual tracer. In input and output files (“start.nc”, “startfi.nc”, see Section 4) tracers are stored separately using their individual names. Loading specific tracers requires that the appropriate tracer names are set in the `traceur.def` file (see Section 6.2.3), and specific computations for given tracers (e.g.: computing the water cycle, chemistry in the upper atmosphere, ...) is controlled by setting corresponding options in the `callphys.def` file (see Section 6.2.2).

## Chapter 3

# The physical parameterizations of the Martian model: some references

### 3.1 General

The Martian General Circulation Model uses a large number of physical parameterizations based on various scientific theories and some generated using specific numerical methods.

A list of these parameterizations is given below, along with the most appropriate references for each one. Most of these documents can be consulted at: <http://www-mars.lmd.jussieu.fr/mars/publi.html>.

**General references:** A document attempts to give a complete scientific description of the current version of the GCM (a version without tracers):

- *Forget et al.* [1999] (article published in JGR)

### 3.2 Radiative transfer

The radiative transfer parameterizations are used to calculate the heating and cooling ratios in the atmosphere and the radiative flux at the surface.

#### 3.2.1 CO<sub>2</sub> gas absorption/emission:

##### Thermal IR radiation

( `lwmain` )

- New numerical method, solution for the radiative transfer equation: *Dufresne et al.* [2005].
- Model validation and inclusion of the “Doppler” effect (but using an old numerical formulation): *Hourdin* [1992] (article).
- At high altitudes, parameterization of the thermal radiative transfer (`nltecool`) when the local thermodynamic balance is no longer valid (e.g. within 0.1 Pa) : Lopez-Valverde et al. [2001] : Report for the ESA available on the web as: “CO<sub>2</sub> non-LTE cooling rate at 15-um and its parameterization for the Mars atmosphere”.

### Absorption of near-infrared radiation

( nirco2abs)

- *Forget et al.* [1999]

### 3.2.2 Absorption/emission and diffusion by dust:

#### Dust spatial distribution

( aeropacity)

- The method for semi-interactive dust vertical distribution is detailed in *Madeleine et al.* [2011]
- Vertical distribution and description of “MGS” and “Viking” scenarios in the ESA report *Mars Climate Database V3.0 Detailed Design Document* by Lewis et al. (2001), available on the web.
- For the “MY24”-“MY26” scenarios, the dust distributions were derived from observations made by TES data is used. See technical note WP12.2.1 of ESA contract Ref ESA 11369/95/NL/JG(SC) ”New dust scenarios for the Mars Climate Model : Martian Years 24-29”, available online at <http://www-mars.lmd.jussieu.fr/WP2011/wp12.1.1.1.pdf>

#### Thermal IR radiation

( lwmain)

- Numerical method: *Toon et al.* [1989]
- Optical properties of dust: *Madeleine et al.* [2011]

#### Solar radiation

( swmain)

- Numerical method: *Toon et al.* [1989]
- Optical properties of dust: see the discussion in *Madeleine et al.* [2011], which quotes properties from *Wolff et al.* [2009].

## 3.3 Subgrid atmospheric dynamical processes

### 3.3.1 Turbulent diffusion in the upper layer

( vdifc)

- Implicit numerical scheme in the vertical: see the thesis of Laurent Li (LMD, Université Paris 7, 1990), Appendix C2.
- Calculation of the turbulent diffusion coefficients: *Forget et al.* [1999].
- fluxes in the near-surface layer: *Colaitis et al.* [2012], technical note WP13.1.3d of ESA contract Ref ESA 11369/95/NL/JG(SC) ”New Mars Climate Model: d) New convection and boundary layer schemes and their impact on Mars meteorology”, available online at <http://www-mars.lmd.jussieu.fr/WP2011/wp13.1.3d.pdf>

### 3.3.2 Convection

( convadj )

- For some details on the convective adjustment, see *Hourdin et al.* [1993]
- The thermals' mass flux scheme is described in *Colaitis et al.* [2012], technical note WP13.1.3d of ESA contract Ref ESA 11369/95/NL/JG(SC) "New Mars Climate Model: d) New convection and boundary layer schemes and their impact on Mars meteorology", available online at <http://www-mars.lmd.jussieu.fr/WP2011/wp13.1.3d.pdf>

### 3.3.3 Effects of subgrid orography and gravity waves

( calldrag\_noro , drag\_noro )

See *Forget et al.* [1999] and *Lott and Miller* [1997]

## 3.4 Surface thermal conduction

(soil)

The numerical scheme is described in section 2 of technical note WP11.1 of ESA contract Ref ESA 11369/95/NL/JG(SC) "Improvement of the high latitude processes in the Mars Global Climate Model", available online at [http://www-mars.lmd.jussieu.fr/WP2008/Polar\\_processes.pdf](http://www-mars.lmd.jussieu.fr/WP2008/Polar_processes.pdf)

## 3.5 CO<sub>2</sub> Condensation

- In *Forget et al.* [1998] (article published in *Icarus*):
  - Numerical method for calculating the condensation and sublimation levels at the surface and in the atmosphere ( newcondens ) explained in the appendix.
  - Description of the numerical scheme for calculating the evolution of CO<sub>2</sub> snow emissivity ( co2snow ) explained in section 4.1
- Noncondensable gaz treatment: see *Forget et al.* [2008], available online at <http://www.lpi.usra.edu/meetings/modeling2008/pdf/9106.pdf>
- Inclusion of sub-surface water ice table thermal effect, varying albedo of polar caps and tuning of the CO<sub>2</sub> cycle are described in technical note WP13.1.3e of ESA contract Ref ESA 11369/95/NL/JG(SC) "New Mars Global Climate Model: e) Improved CO<sub>2</sub> cycle and seasonal pressure variations", available online at <http://www-mars.lmd.jussieu.fr/WP2011/wp13.1.3e.pdf>

## 3.6 Tracer transport and sources

- "Van-Leer" transport scheme used in the dynamical part ( tracv1 and vlsplt in the dynamical part): *Hourdin and Armengaud* [1999]
- Transport by turbulent diffusion (in vdifc), convection (in convadj), sedimentation ( sedim), dust lifting by winds ( dustlift): see note "Preliminary design of dust lifting and transport in the Model" (ESA contract, Work Package 4, 1998, available on the web).
- Dust transport by the "Mass mixing ratio / Number mixing ratio" method for grain size evolution: see article by *Madeleine et al.* [2011]

- **Watercycle**, see *Montmessin et al.* [2004] and technical note WP13.1.3c of ESA contract Ref ESA 11369/95/NL/JG(SC) "New Mars Climate Model: c) Inclusion of cloud microphysics, dust scavenging and improvement of the water cycle", available online at <http://www-mars.lmd.jussieu.fr/WP2011/wp13.1.3c.pdf>
- Radiative effect of clouds: see technical note WP13.1.3b of ESA contract Ref ESA 11369/95/NL/JG(SC) "New Mars Climate Model: b) Radiative effects of water ice clouds and impact on temperatures", available online at <http://www-mars.lmd.jussieu.fr/WP2011/wp13.1.3b.pdf>
- **Chemistry**, see *Lefèvre et al.* [2004] and *Lefèvre et al.* [2008]

### 3.7 Thermosphere

- A general description of the model is given in *González-Galindo et al.* [2009]
- Details on photochemistry and EUV radiative transfer can be found in *Angelats i Coll et al.* [2005] and *González-Galindo et al.* [2005]

## Chapter 4

# Running the model: a practice simulation

This chapter is meant for first time users of the LMD model. As the best introduction to the model is surely to run a simulation, here we explain how to go about it. All you will need are files and scripts necessary to build the GCM (all are in the `LMDZ.COMMON` and `LMDZ.MARS` directories which you will download as explained in the next sections) as well as some initial states to initiate simulations and, if not working on the LMD machines, some extra datafiles for external forcings (topography, dust scenarios, radiative properties of dust and water ice, etc.).

Once you have followed the example given below, you can then go on to change the control parameters and the initial states as you wish. A more detailed description of the model's organization as well as associated inputs and outputs are given in sections 5 and 6.

### 4.1 Obtaining the model

The LMD model project is developed using subversion (svn), the free software versioning and a revision control system. To obtain (download) the latest version of the model, simply go to the directory where you want to install the model and use the relevant svn command:

```
svn checkout http://svn.lmd.jussieu.fr/Planeto/trunk --depth empty
```

Then move to the newly generated trunk directory and download (i.e. `svn update`) the `LMDZ.MARS` and `LMDZ.COMMON` directories (the contents of these directories are described in chapter 5) with:

```
svn update LMDZ.MARS LMDZ.COMMON UTIL
```

If you are not on the LMD machines, you will also need to download a set of files available online at:

```
http://www.lmd.jussieu.fr/~lmdz/planets/mars/datadir
```

(preserve the file names and subdirectory structure). This directory contains input files (topography, dust scenarios, radiative properties of scatterers, etc.) which the GCM needs to run. Where you put your local `datadir` directory (or whatever name you choose for this directory) is not critical, as that location can be specified at runtime (see sections 4.6 and 6.2.2).

To run the model, you will also need some initial condition files that can be downloaded from:

```
http://www.lmd.jussieu.fr/~lmdz/planets/mars/starts
```

(see section 4.5).



## 4.2 Prerequisites

Before downloading and installing the model, a few prerequisites must be satisfied:

1. The NetCDF library must be installed on your system, using the same compiler suite (e.g. gfortran and gcc, or ifort and icc) that you will use to compile the model. The latest version of the NetCDF package is available on the web at the following address:

```
http://www.unidata.ucar.edu/software/netcdf
```

along with instructions for building (or downloading precompiled binaries of) the library.

Note that we provide in the UTIL directory a Bash script `install_netcdf4.0.1.bash` which may be used to download and install version 4.0.1 of the NetCDF library; run `install_netcdf4.0.1.bash -h` to list available options.

2. Some software to load and display NetCDF files such as
  - Ferret <http://ferret.wrc.noaa.gov/Ferret>
  - Panoply <https://www.giss.nasa.gov/tools/panoply>
  - GrAdS <http://grads.iges.org/grads>
  - ncview [http://meteora.ucsd.edu/~pierce/ncview\\_home\\_page.html](http://meteora.ucsd.edu/~pierce/ncview_home_page.html)

among others, should be installed on your system.

3. The `fcm` utility must be installed on your system. If it is not already so, it may be obtained by the following `svn` command:  

```
svn checkout http://forge.ipsl.jussieu.fr/fcm/svn/PATCHED/FCM.V1.2
```

And add its `bin` subdirectory to your `PATH` environment variable to make the `fcm` command available from anywhere.
4. To run at higher resolution (and/or with many tracers) requires some memory, in particular a reasonable `stacksize` (which is often quite limited by default). It is thus highly recommended that you set this value to `unlimited` via the command

```
ulimit -s unlimited
```

before running the GCM, or more pragmatically by adding this instruction to your `.bashrc` or `.profile` so that it is always set.

## 4.3 Installing the model

There are two distinct ways of installing/compiling the model: One (nowdays deprecated) using scripts in the `LMDZ.MARS` directory, and the other (encouraged because one can then also run the model on parallel computers) in the `LMDZ.COMMON` directory

### 4.3.1 Settings in LMDZ.MARS (deprecated)

- Set some environment variables needed for the compilation of the model (it is also possible to set the environment variables in the `makegcm` script, as explained below):

**LMDGCM** : Path to the directory where you have put the model (full path).  
If using Csh:

```
setenv LMDGCM /where/you/put/the/model/LMDZ.MARS
```

If using Bash:

```
export LMDGCM=/where/you/put/the/model/LMDZ.MARS
```

**LIBOGCM** : Path to the directory (`libo` for example) where intermediate objects will be stored during the compilation of the model with the `makegcm` script (if that directory does not exist then `makegcm` will create it).

If using Csh:

```
setenv LIBOGCM /where/you/want/objects/to/go/libo
```

If using Bash:

```
export LIBOGCM=/where/you/want/objects/to/go/libo
```

- Knowing where your NetCDF library is installed, set environment variables **NCDFINC** and **NCDFLIB**:

Once the NetCDF library has been compiled (or downloaded), you should have access to the library `libnetcdf.a` itself, the various files (`netcdf.inc`, `netcdf.mod`, ...) to include in programs, and basic NetCDF software (`nc-dump` and `ncgen`).

To ensure that during compilation, the model can find the NetCDF library and include files, you must declare environment variables **NCDFLIB** and **NCDFINC** (again, it is also possible to set these environment variables in the `makegcm` script, as explained below).

**NCDFLIB** must contain the path to the directory containing the object library `libnetcdf.a` and **NCDFINC** must contain the path to the directory containing the include files (`netcdf.inc`,...)

If using Csh:

```
setenv NCDFINC /wherever/is/netcdf/include
setenv NCDFLIB /wherever/is/netcdf/lib
```

If using Bash:

```
export NCDFINC=/wherever/is/netcdf/include
export NCDFLIB=/wherever/is/netcdf/lib
```

- Go to your `LMDZ.MARS` and adapt the `makegcm` script to fit your needs:

- Examples of `makegcm` scripts, adapted for different compilers (`pgf90`, `g95`, `gfortran` and `ifort`) are provided (files `makegcm`, `makegcm_g95`, `makegcm_gfortran`, `makegcm_ifort`) copy or rename the relevant one as `makegcm` in the same directory.
- As mentioned above, you may edit the script to hard code values of `LMDGCM`, `LIBOGCM`, `NCDFINC` and `NCDFLIB` instead of relying on the use of environment variables (see the commented out examples in the scripts at lines 20-30). Note that since the `makegcm` is a Csh script, Csh syntax must be used there.

### 4.3.2 Settings in LMDZ.COMMON (advised)

You should first compile the IOIPSL library which is used<sup>1</sup> by the GCM. To do this go to the `LMDZ.COMMON/ioipsl` directory. There are a number of example scripts (depending on machines and compiler suites to use) to run to download and install the `ioipsl` library. As an illustrative example we detail here using the `install_ioipsl_gfortran.bash` script:

- Edit script `install_ioipsl_gfortran.bash` to set the path to your NetCDF library in the `setfolder` variable, e.g. `setfolder="/usr/local/netcdf"`
- Run the script: `./install_ioipsl_gfortran.bash`
- If all went well the script should end with the message `OK: ioipsl library is in` followed by the full path to the library `libioipsl.a` and companion module files in in subdirectory `modipsl/lib`

## 4.4 Compiling the model

### 4.4.1 Compiling in LMDZ.MARS (deprecated)

As explained above, compiling the model is done using the `makegcm` script and providing it with the appropriate options:

- Example 1: Compiling the Martian model at grid resolution `64x48x25` for example, type (in compliance with the manual for the `makegcm` function given in section 5.4)

```
makegcm -d 64x48x25 -p mars gcm
```

You will find executable `gcm.e` (the compiled model) in the directory where you ran the `makegcm` command.

- Example 2: Compiling the the Martian model with your choice of compiler options, e.g. to check for array overflow (useful for debugging: warning, the model is then much slower!):

```
makegcm -d 64x48x25 -p mars -O "-C" gcm
```

Note that the `makegcm` script also has a "debug" option which includes a collection of adequate debugging options. To use it, simply add the `-debug` option:

```
makegcm -d 64x48x25 -p mars -debug gcm
```

### 4.4.2 Compiling in LMDZ.COMMON (advised)

The Bash script `makelmdz_fcm` is used to compile the model. It needs not be modified or adapted to your settings, as all specificities are set in corresponding files located in the `arch` subdirectory. For a given machine, e.g. `MyMachine`, one should create two files, `arch-MyMachine.fcm` and `arch-MyMachine.path`, using the provided example files to set appropriate compiler options and paths (for instance `arch-linux-ifort-para.fcm` and `arch-linux-ifort-para.path` are adapted to run on local LMD machines).

The `makelmdz_fcm` script has the mandatory option `-arch MyArch` to specify the arch files to use (the "MyArch" string should be replaced with the name used for your own arch files), and multiple options:

---

<sup>1</sup>It is in fact for now possible to run the GCM without the IOIPSL library but this requires adding the `-io noioipsl` to the `makelmdz_fcm` command line, and might no longer be possible in the future.

- Example 1: Compiling the Martian model at grid resolution 64x48x32

```
makelmdz_fcm -arch linux-ifort -d 64x48x29 -p mars gcm
```

The executable, `gcm_64x48x29_phymars_seq.e` in the present case, will be generated in the `bin` subdirectory.

- Example 2: Compiling as above but in "debug" mode

```
makelmdz_fcm -arch linux-ifort -d 64x48x29 -p mars -debug gcm
```

- Example 3: Compiling the model to run in parallel (MPI) mode:

```
makelmdz_fcm -arch linux-ifort -parallel mpi -d 64x48x29 -p mars gcm
```

- For an overview of all available options:

```
makelmdz_fcm -h
```

Upon successful compilation, the GCM executable is generated in the `LMDZ.COMMON/bin` directory with the following naming convention:

```
gcm_XXX_phymars_YY.e
```

where `XXX` is the model resolution (which was specified with the `-d` argument) and `YY` is either `seq` or `para` depending on if the model was compiled in serial or parallel mode (`-parallel` argument).

## 4.5 Input files (initial states and def files)

In directory `LMDZ.MARS/deftank` you will find some examples of run parameter files (`.def` files) which the model needs at runtime. The four files the model requires (they must be in the same directory as the executable `gcm.e`) are: **run.def** (described in section 6.2) **callphys.def** (see section 6.2.2), **z2sig.def** and **traceur.def**.

The example `.def` files given in the `deftank` directory are for various configurations (e.g. model resolution), copy (and eventually rename these files to match the generic names) to the directory where you will run the model.

Copy initial condition files **start.nc** and **startfi.nc** (described in section 6.2) to the same directory.

You can extract such files from **start\_archive** 'banks of initial states' (i.e. files which contain collections of initial states from standard scenarios and which can thus be used to check if the model is installed correctly) stored on the LMD website at <http://www.lmd.jussieu.fr/~lmdz/planets/mars/starts>. See section 4.10 for a description of how to proceed to extract **start** files from **start\_archives**.

## 4.6 Running the model

Once you have the program **gcm.e**, input files **start.nc** **startfi.nc**, and parameter files **run.def** **callphys.def** **traceur.def** **z2sig.def** in the same directory, simply execute the program to run<sup>2</sup> a simulation:

<sup>2</sup>Note that if you are not running on the LMD machines, you'll have to modify or add, in file `callphys.def`, the line: `datadir = /path/to/datafile`  
Where `/path/to/datafile` is the full path to the directory which contains the set of files downloaded from: <http://www.lmd.jussieu.fr/~lmdz/planets/mars/datadir+>

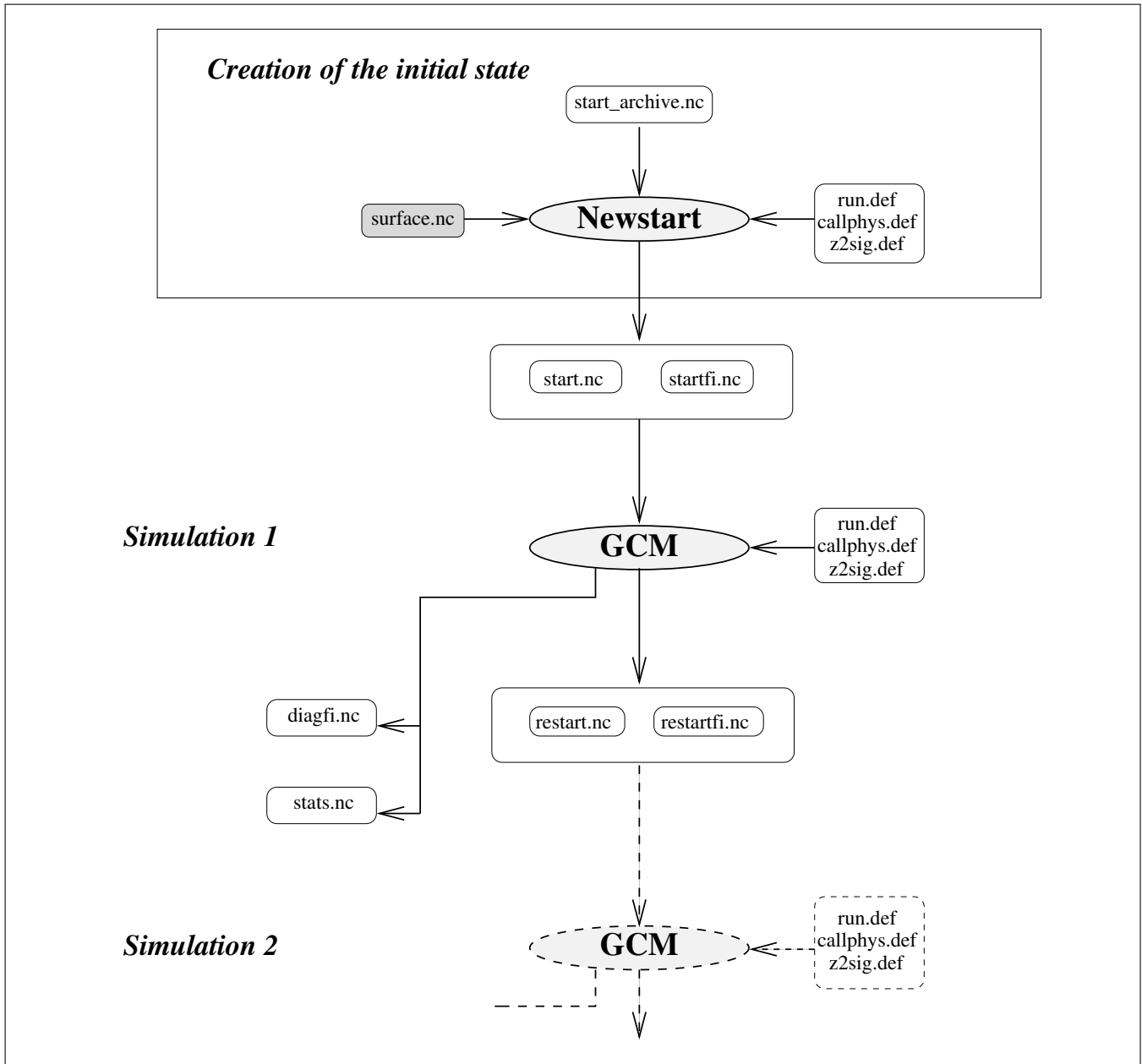


Figure 4.1: Input/output data

```
gcm.e
```

You might also want to keep all messages and diagnostics written to standard output (i.e. the screen). You should then redirect the standard output (and error) to some file, e.g.

```
gcm.out:
```

```
gcm.e > gcm.out 2>&1
```

## 4.7 Visualizing the output files

As the model runs it generates output files **diagfi.nc** and **stats.nc** files. The former contains instantaneous values of various fields and the later statistics (over the whole run) of some variables.

### 4.7.1 Using Ferret to visualize outputs

Documentation and tutorials are available on the Ferret official website:

```
https://ferret.pmel.noaa.gov/Ferret/
```

If you are a new user, we strongly recommend first spending some time browsing the official tutorials and documentation to learn more about Ferret capabilities and usage.

Here is a simple illustrative example of how one may visualize temperature for the 5th layer and 9th time step from a `diagfi.nc` file:

- Ferret session:

```
ferret return
yes? use diagfi.nc
yes? show data (displays information about available variables and their dimensions)
yes? fill temp[k=5,l=9] (plot temperature map of 5th layer and 9th time step)
```

### 4.7.2 Using GrAds to visualize outputs

If you have never used the graphic software **GrAds**, we strongly recommend spending half an hour to familiarize yourself with it by following the demonstration provided for that purpose. The demo is fast and easy to follow and you will learn the basic commands. To do this read file

```
/distrib/local/grads/sample
```

For example, to visualize files `diagfi.nc` and `stats.nc`

NetCDF files `diagfi.nc` and `stats.nc` can be accessed directly using GrAds thanks to utility program `gradsnc`, (the user does not need to intervene).

To visualize the temperature in the 5th layer using file `diagfi.nc` for example:

- GrAdS session:

```
grads return
return (opens a landscape window)
ga-> sdfopen diagfi.nc
```

```

ga-> query file (displays info about the open file, including the name of the
stored variables. Shortcut: q file)
ga-> set z 5 (fixes the altitude to the 5th layer)
ga-> set t 1 (fixes the time to the first stored value)
ga-> query dims (indicates the fixed values for the 4 dimensions. Shortcut: q
dims)
ga-> display temp (displays the temperature card for the 5th layer and for
the first time value stored. Shortcut: d T)
ga-> clear (clears the display. Shortcut: c)
ga-> set gxout shaded (not a contour plot, but a shaded one)
ga-> display temp
ga-> set gxout contour (returns to contour mode to display the levels)
ga-> display temp (superimposes the contours if the clear command is not
used)

```

## 4.8 Resuming a simulation

At the end of a simulation, the model generates **restart** files (files `restart.nc` and `restartfi.nc`) which contain the final state of the model. As shown in figure 4.1, these files (which are of the same format as the start files) can later be used as initial states for a new simulation.

The **restart** files just need to be renamed:

```

mv restart.nc start.nc
mv restartfi.nc startfi.nc

```

and running a simulation with these will in fact resume the simulation from where the previous run ended.

## 4.9 Chain simulations

In practice, we recommend running a chain of simulations lasting several days or longer (or hundreds of days at low resolution).

To do this, a script named `run0` is available in `LMDZ.MARS/deftank`, which should be used as follows:

- Set the length of each simulation in `run.def` (i.e. set the value of `nday`)
- Set the maximum number of simulations at the beginning of the `run0` script (i.e. set the value of `nummax`)
- Copy start files `start.nc startfi.nc` over and rename them `start0.nc startfi0.nc`.
- Run script `run0`

`run0` runs a series of simulations that generate the indexed output files (e.g. `start1`, `startfi1`, `diagfil`, etc.) including files `lrun1`, `lrun2`, etc. containing the redirection of the display and the information about the run.

*NOTE:* to restart a series of simulations after a first series (for example, starting from `start5` and `startfi5`), just write the index of the initial files (e.g. 5) in the file

named `num_run`. If `num_run` exists, the model will start from the index written in `num_run`. If not it will start from, `start0` and `startfi0`.

*NOTE:* A script is available for performing annual runs with 12 seasons at 30° solar longitude as it is in the database (script `run_mcd`, also found in directory `deftank`). This script functions with script `run0`. Just set the number of simulations to 1 in `run0`. Then copy `run.def` into `run.def.ref` and set `nday` to 9999 in this file. To start from `startN.c`, edit the file `run_mcd` and comment (with a #) the N months already created and describe N in `num_run`. Then run `run_mcd`.

## 4.10 Creating and modifying initial states

### 4.10.1 Using program “newstart”

Several model parameters (for example, the dust optical depth) are stored in the initial states (NetCDF files `start.nc` and `startfi.nc`). To change these parameters, or to generally change the model resolution, use program **newstart**.

This program is also used to create an initial state. In practice, we usually reuse an old initial state, and modify it using **newstart**.

Like the GCM, program **newstart** must be compiled (using the `make_lmdz_fcm` script) at the required grid resolution. For example:

```
make_lmdz_fcm -arch local -d 64x48x25 -p mars newstart
```

The resulting executable will be created in the `LMDZ.COMMON/bin` directory, as `newstart_XXX_phymars_seq.e`, where XXX is the dimension (values given to the `-d` argument) for which `newstart` was compiled.

Then run the `newstart` program in a directory containing the `start` and `def` file to be used:

```
newstart.e
```

The program then gives you two options:

```
From which kind of files do you want to create newstart and startfi files
  0 - from a file start_archive
  1 - from files start and startfi
```

- - Option “1” allows you to read and modify the information needed to create a new initial state from the files `start.nc`, `startfi.nc`
- - Option “0” allows you to read and modify the information needed to create a new initial state from file `start_archive.nc` (whatever the `start_archive.nc` grid resolution is).

If you use tracers, make sure that they are taken into account in your `start` files (either `start` or `start_archive`).

Then answer to the various questions in the scroll menu. These questions allow you to modify the initial state for the following parameters.

```
First set of questions:
Modifications of variables in tab_cntrl:
-----
(3)          day_ini : Initial day (=0 at Ls=0)
(19)         z0      : default surface roughness (m)
(21)         emin_turb : minimal energy (PBL)
(20)         lmixmin : mixing length (PBL)
```



```

(26)      emissiv : ground emissivity
(24 et 25)  emisice : CO2 ice max emissivity
(22 et 23)  albedice : CO2 ice cap albedos
(31 et 32)  iceradius : mean scat radius of CO2 snow
(33 et 34)  dtemisice : time scale for snow metamorphism
(27)      tauvis : mean dust vis. reference opacity
(35)      volcapa : soil volumetric heat capacity
(18)      obliquit : planet obliquity (deg)
(17)      peri_day : perihelion date (sol since Ls=0)
( )      peri_ls : perihelion date (Ls since Ls=0)
(15)      periheli : min. sun-mars dist (Mkm)
(16)      aphelie  : max. sun-mars dist (Mkm)

```

Second set of questions :

List of possible changes :

~~~~~

```

flat      : no topography ("aquaplanet")
bilball   : uniform albedo and thermal inertia
z0        : set a uniform surface roughness length
coldspole : cold subsurface and high albedo at      S.Pole
qname     : change tracer name
q=0       : ALL tracer =zero
q=x       : give a specific uniform value to one   tracer
q=profile : specify a profile for a tracer
freedust  : rescale dust to a true value
ini_q     : tracers initialization for chemistry   and water vapour
ini_q-h2o : tracers initialization for chemistry   only
composition : change atm main composition: CO2,N2,Ar, O2,CO
ini_h2osurf : reinitialize surface water ice
noglacier : Remove tropical H2O ice if |lat|<45
watercapn : H2O ice on permanent N polar cap
watercaps : H2O ice on permanent S polar cap
wetstart  : start with a wet atmosphere
isotherm  : Isothermal Temperatures, wind set to   zero
co2ice=0  : remove CO2 polar cap
ptot      : change total pressure
therm_ini_s : set soil thermal inertia to reference  surface values
subsoilice_n : put deep underground ice layer in   northern hemisphere
subsoilice_s : put deep underground ice layer in   southern hemisphere
mons_ice   : put underground ice layer according  to MONS derived data

```

Program **newstart.e** creates files `restart.nc` and `restartfi.nc` that you generally need to rename (for instance rename them in `start0.nc` and `startfi0.nc` if you want to use `run0` or `run.mcd`, starting with season 0; rename them `start.nc` and `startfi.nc` if you just want to perform one run with `gcm.e`).

#### 4.10.2 Creating the initial `start_archive.nc` file

Archive file `start_archive.nc` is created from files `start.nc` and `startfi.nc` by program **start2archive**. Program **start2archive** compiles to the same grid resolution as the `start.nc` and `startfi.nc` grid resolution. For example:

```
makeImd_fcm -arch local -d 64x48x25 -p mars start2archive
```

Then run `start2archive.e`

You now have a `start_archive.nc` file for one season that you can use with `newstart`. If you want to gather other states obtained at other times of year, rerun `start2archive.e` with the `start.nc` and `startfi.nc` corresponding to these. These additional initial states will automatically be added to the `start_archive.nc` file present in the directory.

### 4.10.3 Changing the horizontal or vertical grid resolution

To run at a different grid resolution than available initial conditions files, one needs to use tools **newstart** and **start2archive**

For example, to create initial states at grid resolution  $32 \times 24 \times 25$  from NetCDF files `start` and `startfi` at grid resolution  $64 \times 48 \times 32$ :

- Create file `start_archive.nc` with **start2archive.e** compiled at grid resolution  $64 \times 48 \times 25$  using **old file** `z2sig.def` **used previously**
- Create files `newstart.nc` and `newstartfi.nc` with **newstart.e** compiled at grid resolution  $32 \times 24 \times 25$ , using **new file** `z2sig.def`

If you want to create starts files with tracers for 49 layers using a `start_archive.nc` obtained for 32 layers, do not forget to use the `ini_q` option in `newstart` in order to correctly initialize tracers value for layer 33 to layer 49. You just have to answer yes to the question on thermosphere initialization if you want to initialize the thermosphere part only ( $l=33$  to  $l=49$ ), and no if you want to initialize tracers for all layers ( $l=0$  to  $l=49$ ).

## Chapter 5

# Program organization and compilation script

Currently the model is split between two directories: **LMDZ.COMMON** and **LMDZ.MARS**. The reason for this separation is that all that concerns the dynamics (and which is common to all planets) is in **LMDZ.COMMON** whereas all that concerns the Martian physics is in **LMDZ.MARS**. For historical reasons, **LMDZ.MARS** still includes a dynamical core, but it is strongly recommended to use the **LMDZ.COMMON** (mandatory if you want to run in parallel).

Here is a brief description of the contents of directory **LMDZ.COMMON**:

```
libf/  model FORTRAN Source code (.F or .F90)
        and include files (.h) organised in sub-directories
        (dynamics (dyn3d), filters (filtrez), interface with
        physical packages (dynphy_lonlat), ...)
```

```
arch/  set of architecture files used by the makelmdz_fcm script
```

```
makelmdz_fcm  script to use to compile the GCM and related
              utilities
```

```
bin/  directory where executables generated by the makelmdz_fcm
       script will be generated
```

```
ioipsl/ directory with scripts usefull to download and build the
        IOIPSL library (not needed by the Martian GCM).
```

And a brief description of the **LMDZ.MARS** directory contents:

```
libf/  Model FORTRAN Source code (.F or .F90)
        and include files (.h) organised in sub-directories
        (physics (phymars), dynamics (dyn3d), filters (filtrez)...)

deftank/ A collection of examples of parameter files required
         to run the GCM (run.def, callphys.def, ...)
```

```
util/  A set of programs useful for post-processing GCM outputs.
```

```
makegcm (Obsolete) script that should be used to compile the GCM as well
        as related utilities (newstart, start2archive, testphysld)
```

## 5.1 Organization of the model source files

The model source files are stored in various sub directories in directories `LMDZ.COMMON/libf` and `LMDZ.MARS/libf`. These sub-directories correspond to the different parts of the model:

In `LMDZ.COMMON` one will find directories relevant for the dynamical core:

**grid:** mainly made up of "dimensions.h" file, which contains the parameters that define the model grid, i.e. the number of points in longitude (iim), latitude (jjm) and altitude (llm).

**dyn3d:** contains the dynamical core's serial code.

**dyn3dpar:** contains the dynamical core's parallel code.

**dy3d.common:** contains routine common to serial and parallel dynamical cores.

**dynphy\_lonlat:** contains the physics/dynamics interfaces, including in subdirectory `dynphy_lonlat/phymars` the interface to the Martian physics.

**filtrez:** contains the longitudinal filter sources applied in the polar latitudes where the Courant-Friedrich-Levy stability criterion would otherwise be violated.

**misc:** contains miscellaneous routines, neither specific to dynamics or physics.

**phy\_common:** contains routines common to all physics packages (Mars, Venus, ...)

**aeronomars, phymars:** these are links to the directories of the Mars physics package in `LMDZ.MARS/libf`

**aeronostd, chimtitan, muphytitan, phystd, phytitan, phyvenus:** links, which may be broken, to other physics packages (Titan, Venus, Generic GCM).

In `LMDZ.MARS/libf` are subdirectories relevant to the Mars physics package:

**dyn3d, grid, filtrez:** Obsolete versions of the serial dynamical core (the dynamics package included in `LMDZ.COMMON` should be used instead).

**phymars:** contains the Martian physics routines.

**aeronomars:** contains the Martian chemistry and thermosphere routines.

## 5.2 Programming

The model is written in **Fortran**.

- The program sources are written in "file.F" or "file.F90" files. The extension .F is the standard extension for fixed-form Fortran and the extension .F90 is for free-form Fortran. These files must be preprocessed (by aC **preprocessor** such as (cpp)) before compilation (this behaviour is, for most compilers, implicitly obtained but using a capital F in the extension of the file names).
- Constants are placed in COMMON declarations, located in the common "include" files "file.h" or in relevant modules.
- In general, variables should be passed from subroutine to subroutine as arguments (and never as COMMON blocks).
- In some parts of the code, for "historical" reasons, the following rule is sometimes used: in the subroutine, the variables (ex: name) passed as an argument by the calling program are given the prefix p (ex: pname) while the local variables are given the prefix z (ex: zname). As a result, several variables change their prefix (and thus their name) when passing from a calling subroutine to a called subroutine.

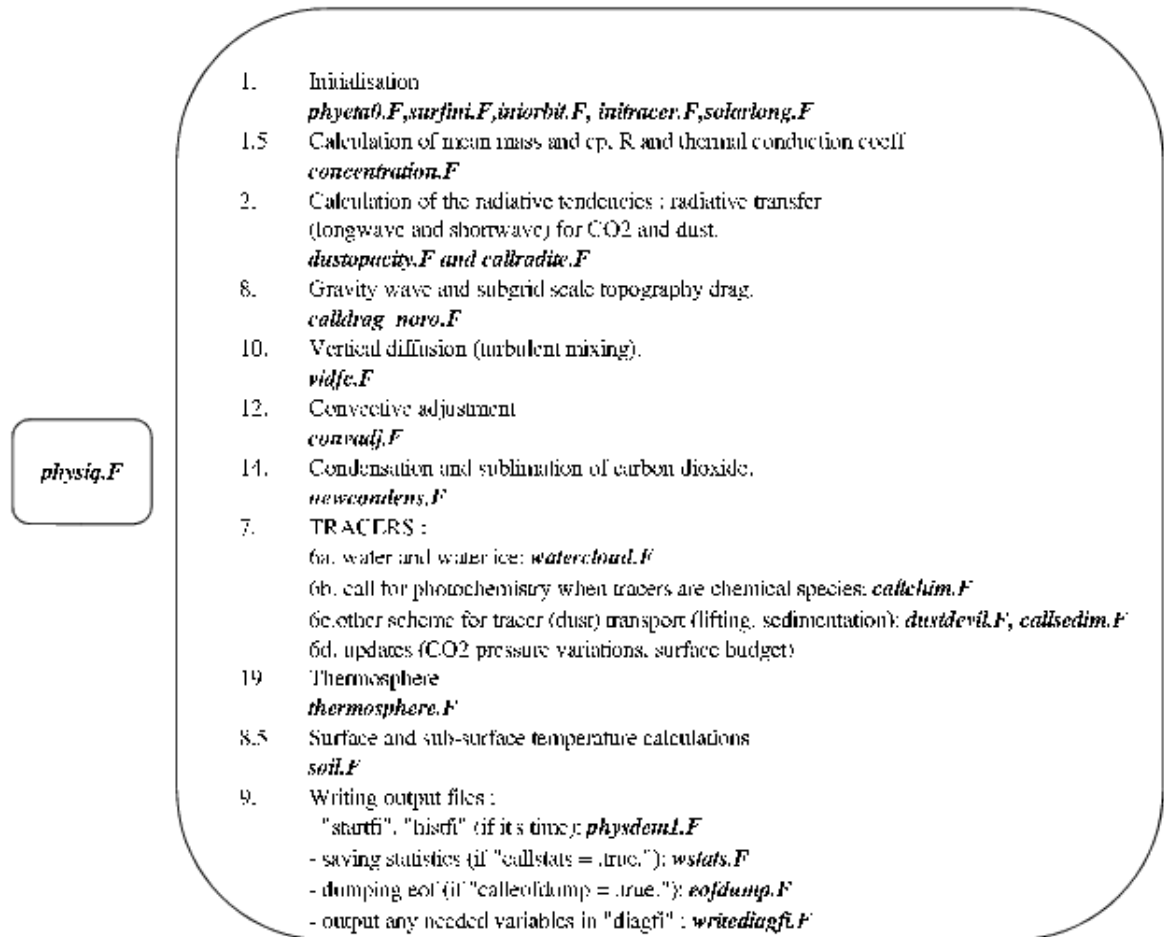


Figure 5.1: Organigram of subroutine function physiq.F

### 5.3 Model organization

Figure 5.1 describes the main subroutines called by physiq.F.

### 5.4 Compiling the model

Technically, the model is compiled using the Unix utility `make`. The `makelmdz_fcm` utility script recreates the `makefile` file when necessary, for example, when a source file has been added or removed since the last compilation.

**None of this is visible to the user. To (re-)compile the model just run the command**

```
makelmdz_fcm
```

with adequate options (e.g. `makelmdz_fcm -arch local -d 62x48x32 -p mars gcm`), as described in section 4.4.

**Help manual for the makelmdz\_fcm script** Use the "-h" option to learn about possible options:

```
make1mdz_fcm -h
```

# Chapter 6

## Input/Output

### 6.1 NetCDF format

GCM input/output data are written in **NetCDF** format (Network Common Data Form). NetCDF is an interface used to store and access geophysical data, and a library that provides an implementation of this interface. The NetCDF library also defines a machine-independent format for representing scientific data. Together, the interface, library and format support the creation, access and sharing of scientific data. NetCDF was developed at the Unidata Program Center in Boulder, Colorado. The freely available source can be obtained from the Unidata website:

<http://www.unidata.ucar.edu/software/netcdf>

A data set in NetCDF format is a single file, as it is self-descriptive.

#### 6.1.1 NetCDF text representation: `ncdump`

This utility is included in the NetCDF library. It generates the CDL representation (text format of the file content) to the standard output from the NetCDF file specified as input.

##### Main options for the `ncdump` command

*`ncdump diagfi.nc`*

dump contents of NetCDF file `diagfi.nc` to standard output (i.e. the screen).

*`ncdump -c diagfi.nc`*

Displays the **coordinate** variable values (variables which are also dimensions), as well as the declarations, variables and attribute values. The values of the non-coordinate variable data are not displayed at the output.

*`ncdump -h diagfi.nc`*

Shows only the informative header of the file, which is the declaration of the dimensions, variables and attributes, but not the values of these variables. The output is identical to that in option `-c` except for the fact that the coordinated variable values are not included.

*`ncdump -v var1,...,varn diagfi.nc`*

The output includes the specific variable values, as well as all the dimensions, variables and attributes. More than one variable can be specified in the list following this option. The list must be a simple argument for the command, and must not contain any spaces. If no variable is specified, the command displays all the values of the variables in the file by default.

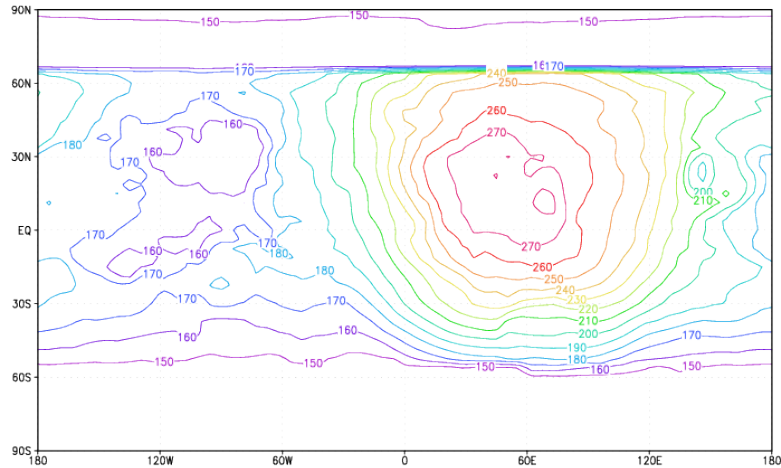


Figure 6.1: Example of temperature data at a given time using GrADS visualization

### 6.1.2 Graphic visualization of NetCDF files using GrAds

GrAdS (The Grid Analysis and Display System) is a graphic software developed by Brian Doty at the "Center for Ocean-Land-Atmosphere (COLA)".

One of its functions is to enable data stored in NetCDF format to be visualized directly. In figure 6.1 for example, we can see the GrADS visualization of the temperature data at a given moment. However, unlike NetCDF, GrADS only recognizes files where all the variables are stored on the same horizontal grid. These variables can be in 1, 2, 3 or 4 dimensions (X,Y,Z and t).

GrADS can also be obtained from:

<http://grads.iges.org/grads/>

### 6.1.3 Graphic visualization of NetCDF files using Ferret

Ferret may also be used to visualize the contents of NetCDF files. Download intruction and documentation are available from the official website:

<https://ferret.pmel.noaa.gov/Ferret/>

## 6.2 Input and parameter files

The (3D version of the) GCM requires the input of two initialization files (in NetCDF format):

- start.nc** contains the initial states of the dynamical variables.
- startfi.nc** contains the initial states of the physical variables.

Note that collections of initial states can be retrieved at:

<http://www.lmd.jussieu.fr/~lmdz/planets/mars/starts>

Extracting **start.nc** and **startfi.nc** from these archived requires using program **newstart**, as described in section 4.10.

To run, the GCM also requires the four following parameter files (ascii text files):

- run.def** the parameters of the dynamical part of the program, and the temporal integration of the model.
- callphys.def** the parameters for calling the physical part.



**-traceur.def** the names of the tracer to use.

**-z2sig.def** the vertical distribution of the atmospheric layers.

Examples of these parameter files can be found in the `LMDZ.MARS/defaultank` directory.

## 6.2.1 run.def

A typical `run.def` file is given as an example below. The choice of variables to be set is simple (e.g. `nday` number of modeled days to run), while the others do not need to be changed for normal use.

The format of the `run.def` file is quite straightforward (and flexible): values given to parameters must be given as:

```
parameter = value
```

Any blank line or line beginning with symbol `#` is a comment, and instruction lines may be written in any order. Moreover, not specifying a parameter/value set (e.g. deleting it or commenting it out) means you want the GCM to use a default built-in value. Additionally, one may use a specific keyword **INCLUDEDEF** to specify another (text) file in which to also read values of parameters; e.g.:

```
INCLUDEDEF=callphys.def
```

Here are some details about some of the parameters which may be set in `run.def`:

- **day\_step**, the number of dynamical steps per day to use for the time integration. This needs to be large enough for the model to remain stable (this is related to the CFL stability criterion which essentially depends on the horizontal resolution of the model). On Mars, in theory, the GCM can run with `day_step=480` using the  $64 \times 48$  grid, but model stability improves when this number is higher: `day_step=960` is recommended when using the  $64 \times 48$  grid. According to the CFL criterion, `day_step` should vary in proportion with the resolution: for example `day_step=480` using the  $32 \times 24$  horizontal resolution. Note that `day_step` must also be divisible by `iperiod`.
- **tetagdiv, tetagrot, tetatemp** control the dissipation intensity. It is better to limit the dissipation intensity (`tetagdiv, tetagrot, tetatemp` should not be too low). However the model diverges if `tetagdiv, tetagrot, tetatemp` are too high, especially if there is a lot of dust in the atmosphere.  
Example used with `nitergdiv=1` and `nitergrot=niterh=2` :
  - using the  $32 \times 24$  grid `tetagdiv=6000 s ; tetagrot=tetatemp=30000 s`
  - using the  $64 \times 48$  grid: `tetagdiv=2500 s ; tetagrot=tetatemp=5000 s`
- **idissip** is the time step used for the dissipation: dissipation is computed and added every `idissip` dynamical time step. If `idissip` is too short, the model waste time in these calculations. But if `idissip` is too long, the dissipation will not be parametrized correctly and the model will be more likely to diverge. A check must be made, so that: `idissip < tetagdiv*daystep/88775` (same rule for `tetagrot` and `tetatemp`). This is tested automatically during the run.
- **iphysiq** is the time step used for the physics: physical tendencies are computed every `iphysiq` dynamical time step. In practice, we usually set the physical time step to be of the order of half an hour. We thus generally set `iphysiq=day_step/48`

*Example of run.def file:*

```
#
#-----
#GCM run control parameters:
```

```

#-----

# planet type
  planet_type=mars

# Number of days to run model for
  nday=9999

# Number of dynamical steps per day (must be a multiple of iperiod)
  day_step = 960

# Apply a Matsuno step every iperiod dynamical step
  iperiod=5

# Control output information in the dynamics every iconser dynamical steps
  iconser=120

# Apply dissipation every idissip dynamical steps
  idissip=1

# dissipation operator to use (star or non-star)
  lstardis=.true.

# use hybrid vertical coordinate (else will use sigma levels)
  hybrid=.true.

# iterate lateral dissipation operator gradiv nitergdiv times
  nitergdiv=1

# iterate lateral dissipation operator nxgradrot nitergrot times
  nitergrot=2

# iterate lateral dissipation operator divgrad niterh times
  niterh=2

# time scale (s) for shortest wavelengths for u,v (gradiv)
  tetagdiv= 2500.

# time scale (s) for shortest wavelengths for u,v (nxgradrot)
  tetagrot=5000.

# time scale (s) for shortest wavelengths for h (divgrad)
  tetatemp=5000.

# coefficient for gamdissip
  coefdis=0.

# time marching scheme (Matsuno if purmats is true, else Matsuno-Leapfrog)
  purmats=.false.

# run with (true) or without (false) physics
  physic=.true.

# call physics every iphysiq dynamical steps
  iphysiq=10

# Use a regular grid
  grireg=.true.

# Output in diagfi file every ecritphy dynamical steps
  ecritphy=240

# longitude (degrees) of zoom center
  clon=63.

# latitude (degrees) of zoom center
  clat=0.

```

```

# enhancement factor of zoom, along longitudes
grossismx=1.

# enhancement factor of zoom, along latitudes
grossismy=1.

# Use an hyperbolic function f(y) if .true., else use a sine
fxyhyph=.false.

# extention along longitudes of zoom region (fraction of global domain)
dzoomx= 0.

# extention along latitudes of zoom region (fraction of global domain)
dzoomy=0.

# zoom stiffness along longitudes
taux=2.

# zoom stiffness along latitudes
tauy=2.

# Fonction f(y) as y = Sin(latitude) if = .true. , else y = latitude
ysinus= .false.

# Use a sponge layer
callsponge = .true.

# Sponge layer extends over topmost nsponge layers
nsponge = 3

# Sponge: mode0 (u=v=0), mode1 (u=umoy,v=0), mode2 (u=umoy,v=vmoy)
mode_sponge= 3

# Sponge layer time scale (s): tetasponge
tetasponge = 30000

# some definitions for the physics, in file 'callphys.def'
INCLUDEDEF=callphys.def

```

## 6.2.2 callphys.def

The `callphys.def` file (along the same format as the `run.def` file) contains parameter/value sets for the physics.

*Example of callphys.def file:*

```

##General options
##~~~~~
#Run with or without tracer transport ?
tracer=.true.

#Directory where external input files are:
datadir=/users/lmdz/WWW/planets/mars/datadir

#Diurnal cycle ? if diurnal=False, diurnal averaged solar heating
diurnal=.true.

#Seasonal cycle ? if season=False, Ls stays constant, to value set in "start"
season = .true.

#write some more output on the screen ?
lwrite = .false.

#Save statistics in file "stats.nc" ?
callstats =.true.

```

```

#Save EOF profiles in file "profiles" for Climate Database?
calleofdump = .false.

## Dust scenario. Used if the dust is prescribed (i.e. if tracer=F or active=F)
## ~~~~~
# =1 Dust opt.deph read in startfi; =2 Viking scenario; =3 MGS scenario,
# =4 Mars Year 24 from TES assimilation (old version of MY24; dust_tes.nc file)
# =6 "cold" (low dust) scenario ; =7 "warm" (high dust) scenario
# =8 "climatology" (our best guess of a typical Mars year) scenario
# =24 Mars Year 24 ; =25 Mars Year 25 (year with a global dust storm) ; ...
# =30 Mars Year 30
iaervar = 24
# Dust opacity at 610 Pa (when constant, i.e. for the iaervar=1 case)
tauvis=0.1
# Dust vertical distribution:
# (=0: old distrib. (Pollack90), =1: top set by "topdustref",
# =2: Viking scenario; =3 MGS scenario)
iddist = 3
# Dust top altitude (km). (Matters only if iddist=1)
topdustref = 55.

## Physical Parameterizations :
## ~~~~~
# call radiative transfer ?
callrad = .true.
# call NLTE radiative schemes ? matters only if callrad=T
callnlte = .true.
# NLTE 15um scheme to use.
# 0-> Old scheme, static oxygen
# 1-> Old scheme, dynamic oxygen
# 2-> New scheme
nltemodel = 2
# call CO2 NIR absorption ? matters only if callrad=T
callnirco2 = .true.
# NIR NLTE correction ? matters only if callnirco2=T
nircorr=1
# call turbulent vertical diffusion ?
calldifv = .true.
# call convective adjustment ?
calladj = .true.
# Thermals
calltherm = .true.
callrichsl = .true.
# call CO2 condensation ?
callcond = .true.
# call thermal conduction in the soil ?
callsoil = .true.
# call Lott's gravity wave/subgrid topography scheme ?
calllott = .true.
# Impose polar cap surface albedos as observed by TES?
TESicealbedo = .true.
## Coefficient for Northern cap albedoes
TESice_Ncoef=1.6
## Coefficient for Southern cap albedoes
TESice_Scoef=1.6

## Radiative transfer options :
## ~~~~~
# the rad.transfer is computed every "iradia" physical timestep
iradia = 1
# Output of the exchange coefficient matrix ? for diagnostic only
callg2d = .false.
# Rayleigh scattering : (should be .false. for now)
rayleigh = .false.

```

```

## Tracer (dust water, ice and/or chemical species) options (used if tracer=T):
## -----
# DUST: Transported dust ? (if >0, use 'dustbin' dust bins)
dustbin = 2
# DUST: Radiatively active dust ? (matters if dustbin>0)
active = .true.
# DUST: use mass and number mixing ratios to predict dust size ?
doubleq = .true.
# DUST: lifted by GCM surface winds ?
lifting = .true.
# DUST: lifted by dust devils ?
calldevil = .false.
# DUST: Scavenging by H2O/CO2 snowfall ?
scavenging = .true.
# DUST/WATERICE: Gravitationnal sedimentation ?
sedimentation = .true.
# WATERICE: Radiatively active transported atmospheric water ice ?
activice = .true.
# WATER: Compute water cycle
water = .true.
# WATER: Microphysical scheme for water-ice clouds?
microphys = .true.
# WATER: parameter contact
mteta = 0.95
# WATER: Effective variance for sedimentation for the log-normal
# distribution of ice particles ?
nuice_sed=0.1
# WATER: current permanent caps at both poles. True IS RECOMMENDED
# (with .true., North cap is a source of water and South pole
# is a cold trap)
caps = .true.
# WATER: Water ice albedo ?
albedo_h2o_ice = 0.35
# WATER: Water ice thermal inertia
inert_h2o_ice = 800
# WATER: Frost thickness threshold for albedo
frost_albedo_threshold = 0.005
# PHOTOCHEMISTRY: include chemical species
photochem = .true.

# SCATTERERS: set number of scatterers. must be compliant with preceding options.
naerkind = 2

## Thermospheric options (relevant if tracer=T) :
## -----
# call thermosphere ?
callthermos = .true.
# WATER: included without cycle (only if water=.false.)
thermoswater = .false.
# call thermal conduction ? (only if callthermos=.true.)
callconduct = .true.
# call molecular viscosity ? (only if callthermos=.true.)
callmolvis = .true.
# call molecular diffusion ? (only if callthermos=.true.)
callmoldiff = .true.
# call thermospheric photochemistry ? (only if callthermos=.true.)
thermochem = .true.
# call EUV heating ? (only if callthermos=.true.)
calleuv=.true.
#Method to include solar variability?
#0-> Fixed EUV input 1-> Variability with E10.7 as observed
solvarmod=0
# fixed E10.7 value (for solvarmod=0)
# (min=80 , ave=140, max=320)
fixed_euv_value=140
#Solar variability as observed for MY? (must be between MY23 and MY32)

```

```

# (only matters if solvarmod=1)
solvaryear=24
# value for the UV heating efficiency
##(experimental values between 0.19 and 0.23, lower values may
## be used to compensate for low 15 um cooling)
euveff = 0.21

```

### 6.2.3 traceur.def

Tracers in input (`start.nc` and `startfi.nc`) and output files (`restart.nc` and `restartfi.nc`) are stored using individual tracer names (e.g. `co2` for CO<sub>2</sub> gas, `h2o_vap` for water vapour, `h2o_ice` for water ice, ...).

The first line of the `traceur.def` file (an ASCII file) must contain the number of tracers to load and use (this number should be the same as given to the `-t` option of the `makegcm` script when the GCM was compiled), followed by the tracer names (one per line). Note that if the corresponding tracers are not found in input files `start.nc` and `startfi.nc`, then the tracer is initialized to zero.

*Example of a traceur.def file:* with CO<sub>2</sub>, dust distribution moments, (water ice) cloud condensation nuclei moments, water vapour and water ice tracers

```

7
co2
dust_number
dust_mass
ccn_number
ccn_mass
h2o_ice
h2o_vap

```

### 6.2.4 z2sig.def

The `Z2sig.def` file contains the pseudo-altitudes (in km) at which the user wants to set the vertical levels.

Note that levels should be unevenly spread, with a higher resolution near the surface in order to capture the rapid variations of variables there. It is recommended to use the altitude levels as set in the `z2sig.def` file provided in the `deftank` directory.

*Example of z2sig.def file (this version for 49 layers between 0 and 300 km):*

```

10.00000      H: atmospheric scale height (km) (used as a reference only)
0.0020736
0.015735
0.0600151
0.163344
0.36358
0.708007
1.25334
2.06571
3.2
4.7
6.6
8.9
11.6
14.7
18.2
22.1
26.4
31.1
36.2

```

41.7  
47.6  
53.9  
60.55  
67.5  
74.5  
81.5  
88.5  
95.5  
102.5  
109.5  
116.5  
123.5  
130.5  
137.5  
144.5  
151.5  
158.5  
165.5  
172.5  
179.5  
186.5  
193.5  
200.5  
207.5  
214.5  
221.5  
228.5  
235.5  
242.5  
249.5

## 6.2.5 Initialization files: start and startfi

Files `start.nc` and `startfi.nc`, like all the NetCDF files of the GCM, are constructed on the same model (see NetCDF file composition, figure 6.2). They contain:

- a header with a “control” variable followed by a series of variables defining the (physical and dynamical) grids
- a series of non temporal variables that give information about surface conditions on the planet.
- a “time” variable giving the values of the different instants at which the temporal variables are stored (a single time value (t=0) for start, as it describes the dynamical initial states, and no time values for startfi, as it describes only a physical state).

To dump (in text format) the contents of a `start.nc` file using the `ncdump` command:

```
ncdump -h start.nc
```

```
netcdf start {  
dimensions:  
    index = 100 ;  
    rlonu = 33 ;  
    latitude = 25 ;  
    longitude = 33 ;  
    rlatv = 24 ;  
    altitude = 18 ;  
    interlayer = 19 ;  
    Time = UNLIMITED ; // (1 currently)  
variables:  
    float controle(index) ;  
        controle:title = "Parametres de controle" ;  
    float rlonu(rlonu) ;
```

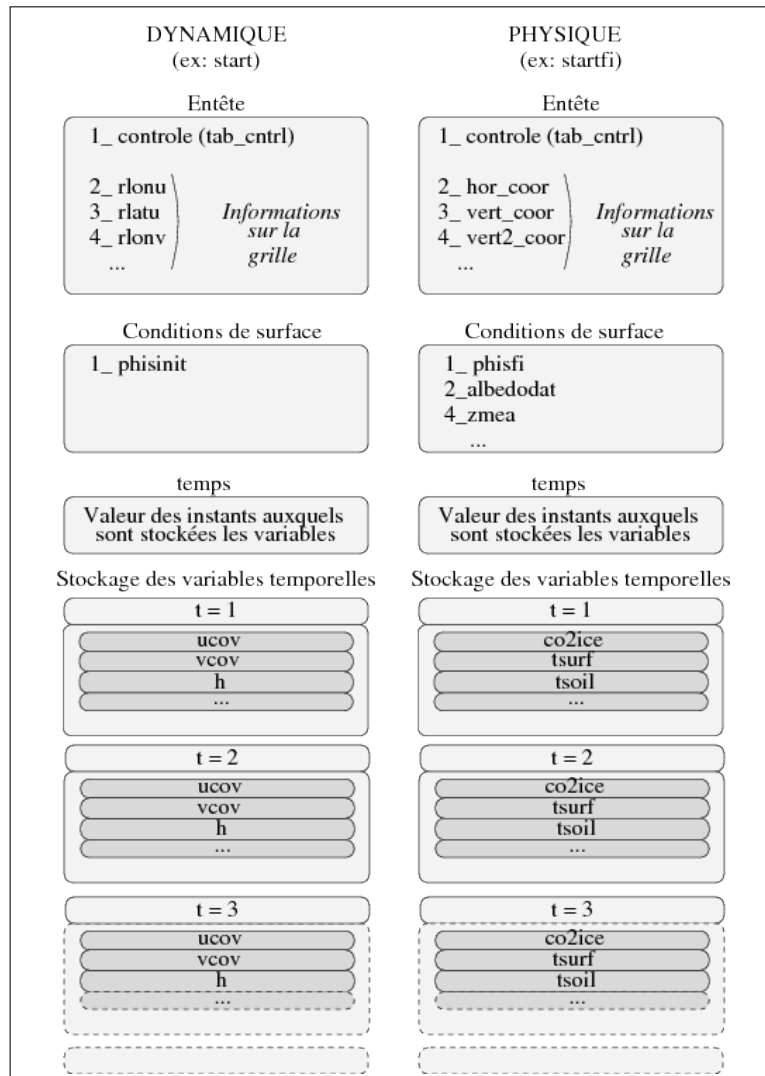


Figure 6.2: Organization of NetCDF files

```

        rlonu:title = "Longitudes des points U" ;
float rlatu(latitude) ;
        rlatu:title = "Latitudes des points U" ;
float rlonv(longitude) ;
        rlonv:title = "Longitudes des points V" ;
float rlatv(rlatv) ;
        rlatv:title = "Latitudes des points V" ;
float ap(interlayer) ;
        ap:title = "Coef A: hybrid pressure levels" ;
float bp(interlayer) ;
        bp:title = "Coef B: hybrid sigma levels" ;
float aps(altitude) ;
        aps:title = "Coef AS: hybrid pressure at midlayers" ;
float bps(altitude) ;
        bps:title = "Coef BS: hybrid sigma at midlayers" ;
float presnivs(altitude) ;
float latitude(latitude) ;
        latitude:units = "degrees_north" ;
        latitude:long_name = "North latitude" ;
float longitude(longitude) ;

```



```

        longitude:long_name = "East longitude" ;
        longitude:units = "degrees_east" ;
float altitude(altitude) ;
        altitude:long_name = "pseudo-alt" ;
        altitude:units = "km" ;
        altitude:positive = "up" ;
float cu(latitude, rlonu) ;
        cu:title = "Coefficient de passage pour U" ;
float cv(rlatv, longitude) ;
        cv:title = "Coefficient de passage pour V" ;
float aire(latitude, longitude) ;
        aire:title = "Aires de chaque maille" ;
float phisinit(latitude, longitude) ;
        phisinit:title = "Geopotentiel au sol" ;
float Time(Time) ;
        Time:title = "Temps de simulation" ;
        Time:units = "days since 1-01-01 00:00:00" ;
float ucov(Time, altitude, latitude, rlonu) ;
        ucov:title = "Vitesse U" ;
float vcov(Time, altitude, rlatv, longitude) ;
        vcov:title = "Vitesse V" ;
float teta(Time, altitude, latitude, longitude) ;
        teta:title = "Temperature" ;
float h2o_ice(Time, altitude, latitude, longitude) ;
        h2o_ice:title = "Traceur h2o_ice" ;
float h2o_vap(Time, altitude, latitude, longitude) ;
        h2o_vap:title = "Traceur h2o_vap" ;
float masse(Time, altitude, latitude, longitude) ;
        masse:title = "C est quoi ?" ;
float ps(Time, latitude, longitude) ;
        ps:title = "Pression au sol" ;

// global attributes:
        :title = "Dynamic start file" ;
}

```

List of contents of a startfi.nc file:

*ncdump -h startfi.nc*

```

netcdf startfi {
dimensions:
    index = 100 ;
    physical_points = 738 ;
    subsurface_layers = 18 ;
    nlayer_plus_1 = 19 ;
    number_of_advectioned_fields = 3 ;
variables:
    float controle(index) ;
        controle:title = "Control parameters" ;
    float soildepth(subsurface_layers) ;
        soildepth:title = "Soil mid-layer depth" ;
    float longitude(physical_points) ;
        longitude:title = "Longitudes of physics grid" ;
    float latitude(physical_points) ;
        latitude:title = "Latitudes of physics grid" ;
    float area(physical_points) ;
        area:title = "Mesh area" ;
    float phisfi(physical_points) ;
        phisfi:title = "Geopotential at the surface" ;
    float albedodat(physical_points) ;
        albedodat:title = "Albedo of bare ground" ;
    float ZMEA(physical_points) ;
        ZMEA:title = "Relief: mean relief" ;
    float ZSTD(physical_points) ;
        ZSTD:title = "Relief: standard deviation" ;
    float ZSIG(physical_points) ;

```

```

        ZSIG:title = "Relief: sigma parameter" ;
float ZGAM(physical_points) ;
        ZGAM:title = "Relief: gamma parameter" ;
float ZTHE(physical_points) ;
        ZTHE:title = "Relief: theta parameter" ;
float co2ice(physical_points) ;
        co2_ice:title = "CO2 ice cover" ;
float inertiedat(subsurface_layers, physical_points) ;
        inertiedat:title = "Soil thermal inertia" ;
float tsurf(physical_points) ;
        tsurf:title = "Surface temperature" ;
float tsoil(subsurface_layers, physical_points) ;
        tsoil:title = "Soil temperature" ;
float emis(physical_points) ;
        emis:title = "Surface emissivity" ;
float q2(nlayer_plus_1, physical_points) ;
        q2:title = "pbl wind variance" ;
float h2o_ice(physical_points) ;
        h2o_ice:title = "tracer on surface" ;

// global attributes:
        :title = "Physics start file" ;
}

```

**Physical and dynamical headers** There are two types of headers: one for the physical headers, and one for the dynamical headers. The headers always begin with a “control” variable (described below), that is allocated differently in the physical and dynamical parts. The other variables in the header concern the (physical and dynamical) grids. They are the following:

the horizontal coordinates

- **rlonu, rlatu, rlonv, rlatv** for the dynamical part,
- **lati, long** for the physical part,

the coefficients for passing from the physical grid to the dynamical grid

- **cu,cv** only in the dynamical header

and finally, the grid box areas

- **aire** for the dynamical part,
- **area** for the physical part.

**Surface conditions** The surface conditions are mostly given in the physical NetCDF files by variables:

- **phisfi** for the initial state of surface geopotential,
- **albedodat** for the bare ground albedo,
- **inertiedat** for the surface thermal inertia,
- **zmea, zstd, zsig, zgam** and **zthe** for the subgrid scale topography.

For the dynamics:

- **physinit** for the initial state of surface geopotential

Remark: variables **phisfi** and **physinit** contain the same information (surface geopotential), but **phisfi** gives the geopotential values on the physical grid, while **physinit** give the values on the dynamical grid.

**Physical and dynamical state variables** To save disk space, the initialization files store the variables used by the model, rather than the “natural” variables.

For the dynamics:

- **ucov** and **vcov** the covariant winds  
These variables are linked to the “natural” winds by  
 $ucov = cu * u$  and  $vcov = cv * v$
- **teta** the potential temperature,  
or more precisely, the potential enthalpy linked to temperature **T** by  $\theta = T \left( \frac{P}{P_{ref}} \right)^{-K}$
- the tracers,
- **ps** surface pressure.
- **masse** the atmosphere mass in each grid box.

“Vectorial” variables **ucov** and **vcov** are stored on “staggered” grids u and v respectively (in the dynamics) (see section 2.2).

Scalar variables **h**, **q** (tracers), **ps**, **masse** are stored on the “scalar” grid of the dynamical part.

For the physics:

- **co2ice** surface dry ice,
- **tsurf** surface temperature,
- **tsoil** temperatures at different layers under the surface,
- **emis** surface emissivity,
- **q2** wind variance,  
or more precisely, the square root of the turbulent kinetic energy.
- the surface “tracer” budget ( $\text{kg.m}^{-2}$ ),

All these variables are stored on the “physical” grid (see section 2.2).

**The “control” array** Both physical and dynamical headers of the GCM NetCDF files start with a **controle** variable. This variable is an array of 100 reals (the vector called `tab_cntrl` in the program), which contains the program control parameters. Parameters differ between the physical and dynamical sections, and examples of both are listed below. The contents of table `tab_cntrl` can also be checked with the command `ncdump -ff -v controle`.

**The “control” array in the header of a dynamical NetCDF file: start**

```

tab_cntrl(1) = FLOAT(iim) ! number of nodes along longitude
tab_cntrl(2) = FLOAT(jjm) ! number of nodes along latitude
tab_cntrl(3) = FLOAT(llm) ! number of atmospheric layers
tab_cntrl(4) = FLOAT(idayref) ! initial day
tab_cntrl(5) = rad    ! radius of the planet
tab_cntrl(6) = omeg   ! rotation of the planet (rad/s)
tab_cntrl(7) = g      ! gravity (m/s2) ~3.72 for Mars
tab_cntrl(8) = cpp

```

```

tab_cntrl(9) = kappa    ! = r/cp
tab_cntrl(10) = daysec ! lenght of a sol (s) ~88775
tab_cntrl(11) = dtvr   ! dynamical time step (s)
tab_cntrl(12) = etot0  ! total energy
tab_cntrl(13) = ptot0  ! total pressure
tab_cntrl(14) = ztot0  ! total enstrophy
tab_cntrl(15) = stot0  ! total enthalpy
tab_cntrl(16) = ang0   ! total angular momentum
tab_cntrl(17) = pa
tab_cntrl(18) = preff  ! reference pressure (Pa)
tab_cntrl(19) = clon  ! longitude of center of zoom
tab_cntrl(20) = clat  ! latitude of center of zoom
tab_cntrl(21) = grossismx ! zooming factor, along longitude
tab_cntrl(22) = grossismy ! zooming factor, along latitude

tab_cntrl(24) = dzoomx ! extention (in longitude) of zoom
tab_cntrl(25) = dzoomy ! extention (in latitude) of zoom

tab_cntrl(27) = taux ! stiffness factor of zoom in longitude
tab_cntrl(28) = tauy ! stiffness factor of zoom in latitude

```

### The "control" array in the header of a physical NetCDF file: startfi.nc

```

c Informations on the physics grid
tab_cntrl(1) = float(ngridmx) ! number of nodes on physics grid
tab_cntrl(2) = float(nlayermx) ! number of atmospheric layers
tab_cntrl(3) = day_ini + int(time) ! initial day
tab_cntrl(4) = time -int(time) ! initiale time of day

c Informations about Mars, used by dynamics and physics
tab_cntrl(5) = rad ! radius of Mars (m) ~3397200
tab_cntrl(6) = omeg ! rotation rate (rad.s-1)
tab_cntrl(7) = g ! gravity (m.s-2) ~3.72
tab_cntrl(8) = mugaz ! Molar mass of the atmosphere (g.mol-1) ~43.49
tab_cntrl(9) = rcp ! = r/cp ~0.256793 (=kappa dans dynamique)
tab_cntrl(10) = daysec ! length of a sol (s) ~88775

tab_cntrl(11) = phystep ! time step in the physics
tab_cntrl(12) = 0.
tab_cntrl(13) = 0.

c Informations about Mars, only for physics
tab_cntrl(14) = year_day ! length of year (sols) ~668.6
tab_cntrl(15) = periheli ! min. Sun-Mars distance (Mkm) ~206.66
tab_cntrl(16) = aphelie ! max. SUN-Mars distance (Mkm) ~249.22
tab_cntrl(17) = peri_day ! date of perihelion (sols since N. spring)
tab_cntrl(18) = obliquit ! Obliquity of the planet (deg) ~23.98

c Boundary layer and turbulence
tab_cntrl(19) = z0 ! surface roughness (m) ~0.01
tab_cntrl(20) = lmixmin ! mixing length ~100
tab_cntrl(21) = emin_turb ! minimal energy ~1.e-8

c Optical properties of polar caps and ground emissivity
tab_cntrl(22) = albedice(1) ! Albedo of northern cap ~0.5
tab_cntrl(23) = albedice(2) ! Albedo of southern cap ~0.5
tab_cntrl(24) = emisice(1) ! Emissivity of northern cap ~0.95
tab_cntrl(25) = emisice(2) ! Emissivity of southern cap ~0.95
tab_cntrl(26) = emissiv ! Emissivity of martian soil ~.95
tab_cntrl(31) = iceradius(1) ! mean scat radius of CO2 snow (north)
tab_cntrl(32) = iceradius(2) ! mean scat radius of CO2 snow (south)
tab_cntrl(33) = dtemisice(1) ! time scale for snow metamorphism (north)
tab_cntrl(34) = dtemisice(2) ! time scale for snow metamorphism (south)

c dust aerosol properties
tab_cntrl(27) = tauvis ! mean visible optical depth

tab_cntrl(28) = 0.

```

```
tab_cntrl(29) = 0.  
tab_cntrl(30) = 0.  
  
! Soil properties:  
tab_cntrl(35) = volcapa ! soil volumetric heat capacity
```

## 6.3 Output files

### 6.3.1 NetCDF restart files - restart.nc and restartfi.nc

These files are of the exact same format as `start.nc` and `startfi.nc`

### 6.3.2 NetCDF file - diagfi.nc

NetCDF file `diagfi.nc` stores the instantaneous physical variables throughout the simulation at regular intervals (set by the value of parameter `ecritphy` in parameter file `run.def`; note that `ecritphy` should be a multiple of `iphysiq` as well as a divisor of `day_step`).

**Any variable from any sub-routine of the physics can be stored by calling subroutine `writediagfi`.** Moreover, one may add a `diagfi.def` file containing only the names of variables to output (one per line) in the directory where the GCM is run, in order to have only those listed outputted in the `diagfi.nc` file.

Illustrative example of the contents of a `diagfi.nc` file (using `ncdump`):  
`ncdump -h diagfi.nc`

```
netcdf diagfi {
dimensions:
    Time = UNLIMITED ; // (12 currently)
    index = 100 ;
    rlonu = 65 ;
    latitude = 49 ;
    longitude = 65 ;
    rlatv = 48 ;
    interlayer = 26 ;
    altitude = 25 ;
    subsurface_layers = 18 ;
variables:
    float Time(Time) ;
        Time:long_name = "Time" ;
        Time:units = "days since 0000-00-0 00:00:00" ;
    float controle(index) ;
        controle:title = "Control parameters" ;
    float rlonu(rlonu) ;
        rlonu:title = "Longitudes at u nodes" ;
    float latitude(latitude) ;
        latitude:units = "degrees_north" ;
        latitude:long_name = "North latitude" ;
    float longitude(longitude) ;
        longitude:long_name = "East longitude" ;
        longitude:units = "degrees_east" ;
    float altitude(altitude) ;
        altitude:long_name = "pseudo-alt" ;
        altitude:units = "km" ;
        altitude:positive = "up" ;
    float rlatv(rlatv) ;
        rlatv:title = "Latitudes at v nodes" ;
    float aps(altitude) ;
        aps:title = "hybrid pressure at midlayers" ;
        aps:units = "Pa" ;
    float bps(altitude) ;
        bps:title = "hybrid sigma at midlayers" ;
        bps:units = "" ;
    float ap(interlayer) ;
        ap:title = "hybrid pressure at interlayers" ;
        ap:units = "Pa" ;
    float bp(interlayer) ;
        bp:title = "hybrid sigma at interlayers" ;
        bp:units = "" ;
```

```

float soildepth(subsurface_layers) ;
    soildepth:long_name = "Soil mid-layer depth" ;
    soildepth:units = "m" ;
    soildepth:positive = "down" ;
float cu(latitude, rlonu) ;
    cu:title = "Conversion coefficients cov <--> natural" ;
float cv(rlatv, longitude) ;
    cv:title = "Conversion coefficients cov <--> natural" ;
float aire(latitude, longitude) ;
    aire:title = "Mesh area" ;
float phisinit(latitude, longitude) ;
    phisinit:title = "Geopotential at the surface" ;
float emis(Time, latitude, longitude) ;
    emis:title = "Surface emissivity" ;
    emis:units = "w.m-1" ;
float tsurf(Time, latitude, longitude) ;
    tsurf:title = "Surface temperature" ;
    tsurf:units = "K" ;
float ps(Time, latitude, longitude) ;
    ps:title = "surface pressure" ;
    ps:units = "Pa" ;
float co2ice(Time, latitude, longitude) ;
    co2ice:title = "co2 ice thickness" ;
    co2ice:units = "kg.m-2" ;
float mtot(Time, latitude, longitude) ;
    mtot:title = "total mass of water vapor" ;
    mtot:units = "kg/m2" ;
float icetot(Time, latitude, longitude) ;
    icetot:title = "total mass of water ice" ;
    icetot:units = "kg/m2" ;
float tauTES(Time, latitude, longitude) ;
    tauTES:title = "tau abs 825 cm-1" ;
    tauTES:units = "" ;
float h2o_ice_s(Time, latitude, longitude) ;
    h2o_ice_s:title = "surface h2o_ice" ;
    h2o_ice_s:units = "kg.m-2" ;
}

```

The structure of the file is thus as follows:

- the dimensions
- variable “time” containing the time of the timestep stored in the file (in Martian days since the beginning of the run)
- variable “control” containing many parameters, as described above.
- from “rhonu” to ‘phisinit’: a list of data describing the geometrical coordinates of the data file, plus the surface topography
- finally, all the 2D or 3D data stored in the run.

### 6.3.3 Stats files

As an option (stats must be set to `.true.` in `callphys.def`), the model can accumulate any variable from any subroutine of the physics by calling subroutine `wstat`

This save is performed at regular intervals 12 times a day. An average of the daily evolutions over the whole run is calculated (for example, for a 10 day run, the averages of the variable values at 0hTU, 2hTU, 4hTU,...24hTU are calculated), along with RMS standard deviations of the variables. This output is given in file `stats.nc`.

Illustrative example of the contents of a `stats.nc` file (using `ncdump`):  
`ncdump -h stats.nc`

```

netcdf stats {
dimensions:
    latitude = 49 ;
    longitude = 65 ;
    altitude = 25 ;
    llmp1 = 26 ;
    Time = UNLIMITED ; // (12 currently)
variables:
    float Time(Time) ;
        Time:title = "Time" ;
        Time:units = "days since 0000-00-0 00:00:00" ;
    float latitude(latitude) ;
        latitude:title = "latitude" ;
        latitude:units = "degrees_north" ;
    float longitude(longitude) ;
        longitude:title = "East longitude" ;
        longitude:units = "degrees_east" ;
    float altitude(altitude) ;
        altitude:long_name = "altitude" ;
        altitude:units = "km" ;
        altitude:positive = "up" ;
    float aps(altitude) ;
        aps:title = "hybrid pressure at midlayers" ;
        aps:units = "" ;
    float bps(altitude) ;
        bps:title = "hybrid sigma at midlayers" ;
        bps:units = "" ;
    float ps(Time, latitude, longitude) ;
        ps:title = "Surface pressure" ;
        ps:units = "Pa" ;
    float ps_sd(Time, latitude, longitude) ;
        ps_sd:title = "Surface pressure total standard deviation over the
e season" ;
        ps_sd:units = "Pa" ;
    float tsurf(Time, latitude, longitude) ;
        tsurf:title = "Surface temperature" ;
        tsurf:units = "K" ;
    float tsurf_sd(Time, latitude, longitude) ;
        tsurf_sd:title = "Surface temperature total standard deviation o
ver the season" ;
        tsurf_sd:units = "K" ;
    float co2ice(Time, latitude, longitude) ;
        co2ice:title = "CO2 ice cover" ;
        co2ice:units = "kg.m-2" ;
    float co2ice_sd(Time, latitude, longitude) ;
        co2ice_sd:title = "CO2 ice cover total standard deviation over t
he season" ;
        co2ice_sd:units = "kg.m-2" ;
    float fluxsurf_lw(Time, latitude, longitude) ;
        fluxsurf_lw:title = "Thermal IR radiative flux to surface" ;
        fluxsurf_lw:units = "W.m-2" ;
    float fluxsurf_lw_sd(Time, latitude, longitude) ;
        fluxsurf_lw_sd:title = "Thermal IR radiative flux to surface tot
al standard deviation over the season" ;
        fluxsurf_lw_sd:units = "W.m-2" ;
    float fluxsurf_sw(Time, latitude, longitude) ;
        fluxsurf_sw:title = "Solar radiative flux to surface" ;
        fluxsurf_sw:units = "W.m-2" ;
    float fluxsurf_sw_sd(Time, latitude, longitude) ;
        fluxsurf_sw_sd:title = "Solar radiative flux to surface total st
andard deviation over the season" ;
        fluxsurf_sw_sd:units = "W.m-2" ;
    float fluxtop_lw(Time, latitude, longitude) ;
        fluxtop_lw:title = "Thermal IR radiative flux to space" ;
        fluxtop_lw:units = "W.m-2" ;
    float fluxtop_lw_sd(Time, latitude, longitude) ;
        fluxtop_lw_sd:title = "Thermal IR radiative flux to space total

```



```

standard deviation over the season" ;
    fluxtop_lw_sd:units = "W.m-2" ;
    float fluxtop_sw(Time, latitude, longitude) ;
    fluxtop_sw:title = "Solar radiative flux to space" ;
    fluxtop_sw:units = "W.m-2" ;
    float fluxtop_sw_sd(Time, latitude, longitude) ;
    fluxtop_sw_sd:title = "Solar radiative flux to space total standard deviation over the season" ;
    fluxtop_sw_sd:units = "W.m-2" ;
    float dod(Time, latitude, longitude) ;
    dod:title = "Dust optical depth" ;
    dod:units = "" ;
    float dod_sd(Time, latitude, longitude) ;
    dod_sd:title = "Dust optical depth total standard deviation over the season" ;
    dod_sd:units = "" ;
    float temp(Time, altitude, latitude, longitude) ;
    temp:title = "Atmospheric temperature" ;
    temp:units = "K" ;
    float temp_sd(Time, altitude, latitude, longitude) ;
    temp_sd:title = "Atmospheric temperature total standard deviation over the season" ;
    temp_sd:units = "K" ;
    float u(Time, altitude, latitude, longitude) ;
    u:title = "Zonal (East-West) wind" ;
    u:units = "m.s-1" ;
    float u_sd(Time, altitude, latitude, longitude) ;
    u_sd:title = "Zonal (East-West) wind total standard deviation over the season" ;
    u_sd:units = "m.s-1" ;
    float v(Time, altitude, latitude, longitude) ;
    v:title = "Meridional (North-South) wind" ;
    v:units = "m.s-1" ;
    float v_sd(Time, altitude, latitude, longitude) ;
    v_sd:title = "Meridional (North-South) wind total standard deviation over the season" ;
    v_sd:units = "m.s-1" ;
    float w(Time, altitude, latitude, longitude) ;
    w:title = "Vertical (down-up) wind" ;
    w:units = "m.s-1" ;
    float w_sd(Time, altitude, latitude, longitude) ;
    w_sd:title = "Vertical (down-up) wind total standard deviation over the season" ;
    w_sd:units = "m.s-1" ;
    float rho(Time, altitude, latitude, longitude) ;
    rho:title = "Atmospheric density" ;
    rho:units = "none" ;
    float rho_sd(Time, altitude, latitude, longitude) ;
    rho_sd:title = "Atmospheric density total standard deviation over the season" ;
    rho_sd:units = "none" ;
    float q2(Time, altitude, latitude, longitude) ;
    q2:title = "Boundary layer eddy kinetic energy" ;
    q2:units = "m2.s-2" ;
    float q2_sd(Time, altitude, latitude, longitude) ;
    q2_sd:title = "Boundary layer eddy kinetic energy total standard deviation over the season" ;
    q2_sd:units = "m2.s-2" ;
    float vmr_h2ovapor(Time, altitude, latitude, longitude) ;
    vmr_h2ovapor:title = "H2O vapor volume mixing ratio" ;
    vmr_h2ovapor:units = "mol/mol" ;
    float vmr_h2ovapor_sd(Time, altitude, latitude, longitude) ;
    vmr_h2ovapor_sd:title = "H2O vapor volume mixing ratio total standard deviation over the season" ;
    vmr_h2ovapor_sd:units = "mol/mol" ;
    float vmr_h2oice(Time, altitude, latitude, longitude) ;
    vmr_h2oice:title = "H2O ice volume mixing ratio" ;

```

```

        vmr_h2o_ice:units = "mol/mol" ;
        float vmr_h2o_ice_sd(Time, altitude, latitude, longitude) ;
        vmr_h2o_ice_sd:title = "H2O ice volume mixing ratio total standard deviation over the season" ;
        vmr_h2o_ice_sd:units = "mol/mol" ;
        float mtot(Time, latitude, longitude) ;
        mtot:title = "total mass of water vapor" ;
        mtot:units = "kg/m2" ;
        float mtot_sd(Time, latitude, longitude) ;
        mtot_sd:title = "total mass of water vapor total standard deviation over the season" ;
        mtot_sd:units = "kg/m2" ;
        float icetot(Time, latitude, longitude) ;
        icetot:title = "total mass of water ice" ;
        icetot:units = "kg/m2" ;
        float icetot_sd(Time, latitude, longitude) ;
        icetot_sd:title = "total mass of water ice total standard deviation over the season" ;
        icetot_sd:units = "kg/m2" ;
    }

```

The structure of the file is similar to the `diagfi.nc` file, except that, as stated before, the average of variables are given for 12 times of the day and that RMS standard deviation are also provided.

# Chapter 7

## Zoomed simulations

The LMD GCM can use a zoom to enhance the resolution locally. In practice, one can increase the latitudinal resolution on the one hand, and the longitudinal resolution on the other hand.

### 7.1 To define the zoomed area

The zoom is defined in `run.def`. Here are the variables that you want to set:

- East longitude (in degrees) of zoom center `clon`
- latitude (in degrees) of zoom center `clat`
- zooming factors, along longitude `grossismx`. *Typically 1.5, 2 or even 3 (see below)*
- zooming factors, along latitude `grossismy`. *Typically 1.5, 2 or even 3 (see below)*
- `fxhyhypb`: **must be set to "T" for a zoom**, whereas it must be *F* otherwise
- extension in longitude of zoomed area `dzoomx`. This is the total longitudinal extension of the zoomed region (degree).  
*It is recommended that  $grossismx \times dzoomx < 200^\circ$*
- extension in latitude of the zoomed region `dzoomy`. This is the total latitudinal extension of the zoomed region (degree).  
*It is recommended that  $grossismy \times dzoomy < 100^\circ$*
- stiffness of the zoom along longitudes `taux`. 2 is for a smooth transition in longitude, more means sharper transition.
- stiffness of the zoom along latitudes `taux`. 2 is for a smooth transition in latitude, more means sharper transition.

### 7.2 Making a zoomed initial state

One must start from an initial state archive `start_archive.nc` obtained from a previous simulation (see section 4.10) Then compile and run `newstart.e` **using the `run.def` file designed for the zoom.**

After running `newstart.e`. The zoomed grid may be visualized using `grads`, for instance. Here is a `grads` script that can be used to map the grid above a topography map:

```

set mpdraw off
set grid off
sdfopen restart.nc
set gxout grid
set digsiz 0
set lon -180 180
d ps
close 1
*** replace the path to surface.nc in the following line:
sdfopen /u/forget/WWW/datagcm/datafile/surface.nc
set lon -180 180
set gxout contour
set clab off
set cint 3
d zMOL

```

### 7.3 Running a zoomed simulation and stability issue

- **dynamical timestep** Because of their higher resolution, zoomed simulation requires a higher timestep. Therefore in `run.def`, the number of dynamical timestep per day `day_step` must be increased by more than `grossismx` or `grossismy` (twice that if necessary). However, you can keep the same physical timestep (48/sol) and thus increase `iphysiq` accordingly (`iphysiq = day_step/48`).
- The very first initial state made with `newstart.e` can be noisy and dynamically unstable. It may be necessary to strongly increase the intensity of the dissipation and increase `day_step` in `run.def` for 1 to 3 sols, and then use less strict values.
- If the run remains very unstable and requires too much dissipation or a too small timestep, a good tip to help stabilize the model is to decrease the vertical extension of your run and the number of layer (one generally zoom to study near-surface process, so 20 to 22 layers and a vertical extension up to 60 or 80 km is usually enough).

## Chapter 8

# Water Cycle Simulation

In order to simulate the water cycle with the LMD GCM:

- In `callphys.def`, set `tracer` to `true`: `tracer=.true..`
- It is best to run with a semi-interactive dust (in order to better represent the evolution available condensation nuclei) and thus set `dustbin = 2`, and use corresponding additional tracers (`dust_mass` and `dust_number` which correspond to the first two moments of the dust distribution).
- Use the same options as given in the sample `callphys.def.watercycle` file provided in `LMDZ.MARS/deftank`.
- **Settings** You need to run with at least 4 tracers (if you don't have dust (`dustbin=0`) or other chemical species (`photochem=F`), but 7 is recommended, and an appropriate `tracer.def` for running with combined CO2, dust and water cycle should be:

```
7
co2
dust_mass
dust_number
h2o_vap
h2o_ice
ccn_mass
ccn_number
```

Note that the order in which tracers are set in the `tracer.def` file is not important.

- **Run**

Same as usual. Just make sure that your start files contains the initial states for all the tracers you use (or else compile and run **newstart.e** to initialize them).

## Chapter 9

# Photochemical Module

The LMD GCM includes a photochemical module, which allows to compute the atmospheric composition.

- 14 chemical species are included: CO<sub>2</sub> (background gas), CO, O, O(<sup>1</sup>D), O<sub>2</sub>, O<sub>3</sub>, H, H<sub>2</sub>, OH, HO<sub>2</sub>, H<sub>2</sub>O<sub>2</sub>, N<sub>2</sub>, Ar (inert) and H<sub>2</sub>O.
- In `callphys.def`, set tracer to true `tracer=.true..` Use the same options as shown below for the tracer part of `callphys.def`. You need to set `photochem=.true.`, and to include the water cycle (`water=.true.`, `sedimentation=.true.`; see Chapter 8), because composition is extremely dependent on the water vapor abundance.
- You will need the up-to-date file `jmars.yyyymmdd` (e.g. `jmars.20140930`), which contains the photodissociation rates. It should be in the *datafile* directory in which are stored datafiles used by the GCM (the path to these files is set in file `callphys.def`).
- **Settings**

Compile as usual, what really matters are the options in `callphys.def` and `traceur.def`. You need at least 19 tracers: 13 chemical species (`co2`, `co`, `o`, `o(1d)`, `o2`, `o3`, `h`, `h2`, `oh`, `ho2`, `h2o2`, `n2`, `ar`) along with water vapor (`h2o_vap`), water ice (`h2o_ice`), related condensation nuclei moments (`ccn_mass` and `ccn_number`), and dust moments (`dust_mass` and `dust_number`).

the `traceur.def` file should thus be something like:

```
19
co2
co
o
o1d
o2
o3
h
h2
oh
ho2
h2o2
n2
ar
```

dust\_mass  
dust\_number  
h2o\_vap  
h2o\_ice  
ccn\_mass  
ccn\_number

- **Run**

Same as usual. Just make sure that your start files contains the correct number of tracers. If you need to initialize the composition, you can run **newstart** and use the options

- `ini_q`: the 15 tracers are initialized, including water ice and vapor.
- `ini_q-h2o`: the 13 chemical species are initialized, water ice is put to zero, and water vapor is kept untouched.
- `ini_q-iceh2o`: the 13 chemical species are initialized, water ice and vapor are kept untouched.

The initialization is done with the files `atmosfera_LMD_may.dat` and `atmosfera_LMD_min.dat`, which should also be found in the *datafile* directory.

- **Outputs**

The outputs can be done from the `aeronomars/calchim.F` routine for the 14 chemical species. The variables put in the `diagfi.nc` and `stats.nc` files are labeled (where *name* is the name of the chemical species, e.g. `co2`):

- `n_name`: local density (in molecule  $\text{cm}^{-3}$ , 3-dimensional field)
- `c_name`: integrated column density (in molecule  $\text{cm}^{-2}$ , 2-dimensional field)

## Chapter 10

# Thermosphere

Some advice and comments about running the GCM with the thermosphere (roughly speaking, above 125 km):

- When running with the thermosphere, one must ensure that the model extends high enough. In practice running with 49 levels (as defined in the default `z2sig.def` file is necessary).
- Example of definition files appropriate for simulating the thermosphere are provided in the `LMDZ.MARS/deftank` directory: `callphys.def.MCD5`, `run.def.64x48x49.MCD5` and `traceur.def.MCD5`
- Chemistry in the thermosphere requires that file `chemthermos.reactionrates.def` (available in the `deftank` directory) be present in the directory where the GCM is run.
- The main forcing in the thermosphere is the Extreme UV (EUV) input received from the Sun. Two settings are possible, depending on the value of flag `solvarmod` (in `callphys.def`):
  - If `solvarmod=0`, then the solar forcing is fixed throughout the simulation, using the E10.7 value set by the `fixed_euv_value` flag.
  - if `solvarmod=1`, the the solar forcing evolves daily, following observed values of E10.7. For this case, one must also set the Mars Year (MY 23 to 33 are currently available) using the `solvaryear` flag.



# Chapter 11

## 1D version of the Mars model

The physical part of the model can be used to generate realistic 1-D simulations (one atmosphere column). In practice, the simulation is controlled from a main program called `testphys1d.F` which, after initialization, then calls the master subroutine of the physics `physiq.F` described in the preceding chapters.

### 11.1 Compilation

To compile the Martian model in 1-D with 29 layers, simply type (in compliance with the `makelmdz_fcm` function manual described in section 5.4)

```
makelmdz_fcm -arch local -d 29 -p mars testphys1d
```

You will find executable **testphys1d.29\_phymars.seq.e** (the compiled model) in the `bin` subdirectory from which you ran the `makelmdz_fcm` command.

### 11.2 1-D runs and input files

The 1-D model does not use an initial state file (the simulation must be long enough to obtain a balanced state). Thus, to generate a simulation simply type:

```
./testphys1d.e
```

The following example files are available in the `deftank` directory (copy them into your working directory first):

- **callphys.def** : controls the options in the physics, just like for the 3D GCM.
- **z2sig.def** : controls the vertical discretization (no change needed, in general), functions as with the 3D GCM.
- **traceur.def** : controls the tracer names (this file may not be present, as long as you run without tracers (option `tracer=.false.` in `callphys.def`))
- **run.def** : controls the 1-D run parameters and initializations (this is actually file `run.def.1d` the `deftank` directory, which must be renamed `run.def` to be read by the program).

The last file is different from the 3D GCM's `run.def` input file, as it contains options specific to the 1-D model, as shown in the example below:

```
#
#-----
# Run parameters for the 1D 'testphys1d.e' model
#-----
```

```

#### Time integration parameters
#
# Initial date (in martian sols ; =0 at Ls=0)
day0=0
# Initial local time (in hours, between 0 and 24)
time=0
# Number of time steps per sol
day_step=48
# Number of sols to run
ndt = 100

#### Physical parameters
#
# Surface pressure (Pa)
psurf= 610
# Reference dust opacity at 610 Pa, in the visible (true tau~tauref*psurf/610)
tauvis=0.2
# latitude (in degrees)
latitude= 0.
# Albedo of bare ground
albedo=0.2
# Soil thermal inertia (SI)
inertia=400
# zonal eastward component of the geostrophic wind (m/s)
u=10.
# meridional northward component of the geostrophic wind (m/s)
v=0.
# Initial CO2 ice on the surface (kg.m-2)
co2ice=0
# Water ice cap on ground ?
watercaptag=.false.
## Slopes parameters:
# (for slope insolation scheme, when callslope=.true. in callphys.def)
# slope_inclination angle (deg) 0: horizontal, 90: vertical
slope_inclination=20.0
# slope orientation (deg)
# 0 == Northward, 90 == Eastward, 180 == Southward, 270 == Westward
slope_orientation=90.0

# hybrid vertical coordinate ? (.true. for hybrid and .false. for sigma levels)
hybrid=.true.

##### Initial atmospheric temperature profile
#
# Type of initial temperature profile
#   ichoice=1   Constant Temperature: T=tref
#   ichoice=2   Savidjari profile (as Seiff but with dT/dz=cte)
#   ichoice=3   Lindner (polar profile)
#   ichoice=4   inversion
#   ichoice=5   Seiff (standard profile, based on Viking entry)
#   ichoice=6   constant T + gaussian perturbation (levels)
#   ichoice=7   constant T + gaussian perturbation (km)
#   ichoice=8   Read in an ascii file "profile"
ichoice=5
# Reference temperature tref (K)
tref=200
# Add a perturbation to profile if isin=1
isin=0
# peak of gaussian perturbation (for ichoice=6 or 7)
pic=26.522
# width of the gaussian perturbation (for ichoice=6 or 7)
largeur=10
# height of the gaussian perturbation (for ichoice=6 or 7)
hauteur=30.

```

```
# some definitions for the physics, in file 'callphys.def'  
INCLUDEDEF=callphys.def
```

Note that, just as for the 3-D GCM `run.def` file, input parameters may be given in any order, or even not given at all (in which case default values are used by the program).

Initial conditions for tracers can be provided as ASCII text files; when **testphys1d.e** runs, it looks for a `profile_*` file, where `*` stands for a tracer name (as given in the `tracer.def` file) to initialize the tracer profile. The data in the file should be given as one value per line, first line for the surface value (in kg/m<sup>2</sup>), followed by values for each atmospheric layer (going from bottom to top of the atmosphere). If no `profile_*` file is found, then the tracer values are initialized to zero (except for the 'co2' tracer, which will be set to 0.95).

### 11.3 Output data

During the entire 1D simulation, you can obtain output data for any variable from any physical subroutine by using subroutine `writediagfi` (as when running 3D simulations, but specifying the correct dimensions for the field)

Example of a call to subroutine `writediagfi` requesting temperature output:  
( `ngrid` horizontal point, `nlayer` layers, variable `zt` called "temp" in K units):

```
CALL WRITEDIAGFI(ngrid, 'temp', 'Temperature', 'K', 1, zt)
```

## Appendix A

# GCM Martian Calendar

For Mars, dates and seasons are expressed in Solar Longitude ( $L_s$ , in degrees or in radians) counting from the northern hemisphere spring equinox. In the GCM, time is counted in Martian solar days, or “sols” (1 sols = 88775 s) from the northern spring equinox. The following table gives the correspondence between sols and  $L_s$ , calculated for the GCM using one Martian year = 669 sols exactly.

| sol    | $L_s$   |                   | sol     | $L_s$            |         | sol              | $L_s$   |  |                   |
|--------|---------|-------------------|---------|------------------|---------|------------------|---------|--|-------------------|
| 0.     | 360.000 | Spring equinox N  | 240.    | 111.455          |         | 480.             | 247.408 |  |                   |
| 5.     | 2.550   |                   | 245.    | 113.816          |         | 485.             | 250.666 |  |                   |
| 10.    | 5.080   |                   | 250.    | 116.190          |         | 490.             | 253.925 |  |                   |
| 15.    | 7.590   |                   | 255.    | 118.578          |         | 495.             | 257.182 |  |                   |
| 20.    | 10.081  |                   | 260.    | 120.981          |         | 500.             | 260.435 |  |                   |
| 25.    | 12.554  |                   | 265.    | 123.400          |         | 505.             | 263.683 |  |                   |
| 30.    | 15.009  |                   | 270.    | 125.835          |         | 510.             | 266.924 |  |                   |
|        |         |                   |         |                  |         | 514.76           | 270.    |  | Winter solstice N |
| 35.    | 17.447  |                   | 275.    | 128.287          |         | 515.             | 270.156 |  |                   |
| 40.    | 19.869  |                   | 280.    | 130.756          |         | 520.             | 273.377 |  |                   |
| 45.    | 22.275  |                   | 285.    | 133.243          |         | 525.             | 276.587 |  |                   |
| 50.    | 24.666  |                   | 290.    | 135.750          |         | 530.             | 279.783 |  |                   |
| 55.    | 27.043  |                   | 295.    | 138.275          |         | 535.             | 282.965 |  |                   |
| 60.    | 29.407  | 300.              | 140.821 | 540.             | 286.130 |                  |         |  |                   |
| 65.    | 31.758  | 305.              | 143.388 | 545.             | 289.277 |                  |         |  |                   |
| 70.    | 34.096  | 310.              | 145.975 | 550.             | 292.406 |                  |         |  |                   |
| 75.    | 36.423  | 315.              | 148.585 | 555.             | 295.515 |                  |         |  |                   |
| 80.    | 38.739  | 320.              | 151.217 | 560.             | 298.604 |                  |         |  |                   |
| 85.    | 41.046  | 325.              | 153.872 | 565.             | 301.671 |                  |         |  |                   |
| 90.    | 43.343  | 330.              | 156.550 | 570.             | 304.715 |                  |         |  |                   |
| 95.    | 45.631  | 335.              | 159.251 | 575.             | 307.737 |                  |         |  |                   |
| 100.   | 47.912  | 340.              | 161.977 | 580.             | 310.735 |                  |         |  |                   |
| 105.   | 50.186  | 345.              | 164.727 | 585.             | 313.709 |                  |         |  |                   |
| 110.   | 52.453  | 350.              | 167.502 | 590.             | 316.658 |                  |         |  |                   |
| 115.   | 54.714  | 355.              | 170.301 | 595.             | 319.583 |                  |         |  |                   |
| 120.   | 56.970  | 360.              | 173.126 | 600.             | 322.483 |                  |         |  |                   |
| 125.   | 59.222  | 365.              | 175.975 | 605.             | 325.358 |                  |         |  |                   |
| 130.   | 61.471  | 370.              | 178.850 | 610.             | 328.207 |                  |         |  |                   |
|        |         | 371.99            | 180.    | Autumn equinox N | .       |                  |         |  |                   |
| 135.   | 63.716  | 375.              | 181.750 | 615.             | 331.032 |                  |         |  |                   |
| 140.   | 65.959  | 380.              | 184.675 | 620.             | 333.831 |                  |         |  |                   |
| 145.   | 68.201  | 385.              | 187.624 | 625.             | 336.606 |                  |         |  |                   |
| 150.   | 70.442  | 390.              | 190.598 | 630.             | 339.356 |                  |         |  |                   |
| 155.   | 72.683  | 395.              | 193.596 | 635.             | 342.082 |                  |         |  |                   |
| 160.   | 74.925  | 400.              | 196.618 | 640.             | 344.783 |                  |         |  |                   |
| 165.   | 77.168  | 405.              | 199.662 | 645.             | 347.461 |                  |         |  |                   |
| 170.   | 79.413  | 410.              | 202.729 | 650.             | 350.116 |                  |         |  |                   |
| 175.   | 81.661  | 415.              | 205.818 | 655.             | 352.748 |                  |         |  |                   |
| 180.   | 83.912  | 420.              | 208.927 | 660.             | 355.357 |                  |         |  |                   |
| 185.   | 86.167  | 425.              | 212.056 | 665.             | 357.945 |                  |         |  |                   |
|        |         |                   |         | 669.             | 0.      | Spring equinox N |         |  |                   |
| 190.   | 88.427  | 430.              | 215.203 | 670.             | 0.512   |                  |         |  |                   |
| 193.47 | 90.     | Summer solstice N |         |                  |         |                  |         |  |                   |
| 195.   | 90.693  | 435.              | 218.368 | 675.             | 3.057   |                  |         |  |                   |
| 200.   | 92.965  | 440.              | 221.549 | 680.             | 5.583   |                  |         |  |                   |
| 205.   | 95.245  | 445.              | 224.746 | 685.             | 8.089   |                  |         |  |                   |
| 210.   | 97.532  | 450.              | 227.955 | 690.             | 10.577  |                  |         |  |                   |
| 215.   | 99.827  | 455.              | 231.177 | 695.             | 13.046  |                  |         |  |                   |
| 220.   | 102.131 | 460.              | 234.409 | 700.             | 15.498  |                  |         |  |                   |
| 225.   | 104.446 | 465.              | 237.650 | 705.             | 17.933  |                  |         |  |                   |
| 230.   | 106.770 | 470.              | 240.898 | 710.             | 20.351  |                  |         |  |                   |
| 235.   | 109.107 | 475.              | 244.151 | 715.             | 22.755  |                  |         |  |                   |
| 240.   | 111.455 | 480.              | 247.408 | 720.             | 25.143  |                  |         |  |                   |

# Appendix B

## Utilities

A few post-processing tools, which handle GCM outputs (files `diagfi.nc` and `stats.nc`) are available in the `LMDZ.MARS/util` subdirectory. This directory contains the sources codes along with a `README.exec` file which explains what the various programs are for and how to compile them.

### B.1 `concatnc`

This program concatenates consecutive output files (`diagfi.nc` or even `stats.nc` files) for a selection of variable, in order to obtain one single big file. The time dimension of the output can be "sols" or "Ls" (note that in that latter case, Ls values won't be evenly distributed, and software like Grads may not be able to use and plot the data).

To obtain an evenly sampled "Ls" timescale, you can use the `lslin.e` program (described below).

The output file created by `conctanc.e` is `concat.nc`

### B.2 `lslin`

This program is designed to interpolate data given in irregular Solar Longitude (Ls) into an evenly sampled linear time coordinate (usable with Grads). Input Netcdf files may be `diagfi.nc` or `concat.nc` files and the resulting output file is `lslin.nc` `lslin` also create a `lslin.ctl` file that can be read directly by `grads` (`>xdfopen lslin.ctl`) to plot in Ls coordinate to avoid some problem with `grads` when `Grads` think that "the time interval is too small"...

### B.3 `localtime`

The `localtime.e` program is designed to re-interpolate data in order to yield values at the same given local time (useful to mimic satellite observations, or analyse day to day variations at given local time).

Input files may be of `diagfi.nc`, `stats.nc` or `concat.nc` type and the output file name is build from the input one, to which `_LT.nc` is appened (e.g. if the input file is `myfile.nc` then output file will be `myfile_LT.nc`).

### B.4 `zrecast`

With this program you can recast atmospheric (i.e.: 4D-dimentional longitude-latitude-altitude-time) data from GCM outputs (e.g. as given in `diagfi.nc`, `concat.nc` and `stats.nc` files) onto either *pressure* or *altitude above areoid* vertical coordinates.

Since integrating the hydrostatic equation is required to recast the data, the input file must contain surface pressure and atmospheric temperature, as well as the ground geopotential.

If recasting data onto *pressure* coordinates, then the output file name is given by the input file name to which `_P.nc` will be appened. If recasting data onto *altitude above areoid* coordinates, then a `_A.nc` will be appened.

### B.5 `hrecast`

This program can interpolate GCM output on any horizontal grid (regular lat - lon) as long as it cover all the planet. Useful to compare runs obtained at different horizontal resolutions.

## **B.6 expandstartfi**

This program takes a physics start file (`startfi.nc`) and recasts it on the corresponding lonlat grid (so its contents may easily be displayed using Grads, Ferret, etc.)

## **B.7 extract**

This program extracts (ie: interpolates) pointwise values of an atmospheric variable from a 'zrecast'ed diagfi file (works if altitude is geometrical height or a pressure vertical coordinates).

# Bibliography

- [1] M. Angelats i Coll, F. Forget, M. A. López-Valverde, and F. González-Galindo. The first Mars thermospheric general circulation model: The Martian atmosphere from the ground to 240 km. *Geophys. Res. Lett.*, 32:4201, 2005.
- [2] J.-L. Dufresne, R. Fournier, C. Hourdin, and F. Hourdin. Net Exchange Reformulation of Radiative Transfer in the CO<sub>2</sub> 15- $\mu$ m Band on Mars. *Journal of Atmospheric Sciences*, 62:3303–3319, 2005.
- [3] F. Forget, F. Hourdin, R. Fournier, C. Hourdin, O. Talagrand, M. Collins, S. R. Lewis, P. L. Read, and J-P. Huot. Improved general circulation models of the Martian atmosphere from the surface to above 80 km. *J. Geophys. Res.*, 104:24,155–24,176, 1999.
- [4] F. Forget, F. Hourdin, and O. Talagrand. CO<sub>2</sub> snow fall on Mars: Simulation with a general circulation model. *Icarus*, 131:302–316, 1998.
- [5] F. González-Galindo, F. Forget, M. A. López-Valverde, and M. Angelats i Coll. A Ground-to-Exosphere Martian General Circulation Model. 2. The Atmosphere During Perihelion Conditions: Thermospheric Polar Warming. *Journal of Geophysical Research (Planets)*, 114(E13):E08004, 2009.
- [6] F. González-Galindo, F. Forget, M. A. López-Valverde, M. Angelats i Coll, and E. Millour. A Ground-to-Exosphere Martian General Circulation Model. 1. Seasonal, Diurnal and Solar Cycle Variation of Thermospheric Temperatures. *Journal of Geophysical Research (Planets)*, 114(E13):4001, 2009.
- [7] F. González-Galindo, M. A. López-Valverde, M. Angelats i Coll, and F. Forget. Extension of a Martian general circulation model to thermospheric altitudes: UV heating and photochemical models. *Journal of Geophysical Research (Planets)*, 110(E9):9008, 2005.
- [8] C. Hourdin, J.-L. Dufresnes, R. Fournier, and F. Hourdin. Net exchange reformulation of radiative transfer in the CO<sub>2</sub> 15 $\mu$ m band on mars. Article in preparation, 2000.
- [9] F. Hourdin and A. Armengaud. Test of a hierarchy of finite-volume schemes for transport of trace species in an atmospheric general circulation model. *Mon. Wea. Rev.*, 127:822–837, 1999.
- [10] F. Hourdin, Phu Le Van, F. Forget, and O. Talagrand. Meteorological variability and the annual surface pressure cycle on Mars. *J. Atmos. Sci.*, 50:3625–3640, 1993.
- [11] Frédéric Hourdin. A new representation of the CO<sub>2</sub> 15  $\mu$ m band for a Martian general circulation model. *J. Geophys. Res.*, 97(E11):18,319–18,335, 1992.
- [12] F. Lefèvre, J.-L. Bertaux, R. T. Clancy, T. Encrenaz, K. Fast, F. Forget, S. Lebonnois, F. Montmessin, and S. Perrier. Heterogeneous chemistry in the atmosphere of Mars. *Nature*, 454:971–975, 2008.
- [13] F. Lefèvre, S. Lebonnois, F. Montmessin, and F. Forget. Three-dimensional modeling of ozone on Mars. *Journal of Geophysical Research (Planets)*, 109:E07004, 2004.
- [14] S. R. Lewis, M. Collins, P. L. Read, F. Forget, F. Hourdin, R. Fournier, C. Hourdin, O. Talagrand, and J-P. Huot. A climate database for Mars. *J. Geophys. Res.*, 104:24,177–24,194, 1999.
- [15] F. Lott and M. Miller. A new sub-grid scale orographic drag parametrization: its formulation and testing. *Q. J. R. Meteorol. Soc.*, 123:101–128, 1997.
- [16] J.-B. Madeleine, F. Forget, E. Millour, L. Montabone, and M. J. Wolff. Revisiting the radiative impact of dust on Mars using the LMD Global Climate Model. *Journal of Geophysical Research (Planets)*, 116:11010, November 2011.
- [17] F. Montmessin, F. Forget, P. Rannou, M. Cabane, and R. M. Haberle. Origin and role of water ice clouds in the Martian water cycle as inferred from a general circulation model. *Journal of Geophysical Research (Planets)*, 109(E18):10004, 2004.



- [18] O. B. Toon, C. P. McKay, T. P. Ackerman, and K. Santhanam. Rapid calculation of radiative heating rates and photodissociation rates in inhomogeneous multiple scattering atmospheres. *J. Geophys. Res.*, 94:16,287–16,301, 1989.
- [19] M. J. Wolff, M. D. Smith, R. T. Clancy, R. Arvidson, M. Kahre, F. Seelos, S. Murchie, and H. Savijärvi. Wavelength dependence of dust aerosol single scattering albedo as observed by the Compact Reconnaissance Imaging Spectrometer. *Journal of Geophysical Research (Planets)*, 114(E13):0–, 2009.